

NEBNext® Ultra™ II Directional RNA Library Prep Kit for Illumina®

NEB #E7760S/L, #E7765S/L

24/96 reactions

Version 6.0_7/24

Table of Contents

Required Materials Not Included.....	2
Considerations on Choosing an RNA-seq Library Preparation Method	3
NEBNext Ultra II Directional RNA Product Selection Guide	3
Overview.....	3
Section 1	
Protocol for use with NEBNext Poly(A) mRNA Magnetic Isolation Module	4
Section 2	
Protocol for use with NEBNext rRNA Depletion Kit v2 (Human/Mouse/Rat)	13
Section 3	
Protocol for use with FFPE RNA, NEBNext rRNA Depletion Kit v2 (Human/Mouse/Rat).....	21
Section 4	
Protocol for use with Purified mRNA or rRNA Depleted RNA	29
Section 5	
Protocol for use with rRNA Depleted FFPE RNA	36
Section 6	
Appendix A	42
Section 7	
Troubleshooting Guide	45
Kit Components	47
Revision History	49

The Library Prep Kit Includes

The volumes provided are sufficient for preparation of up to 24 reactions (NEB #E7760S/#E7765S) and 96 reactions (NEB #E7760L/#E7765L).

Package 1: Store at –20°C.

- (lilac) NEBNext First Strand Synthesis Reaction Buffer
- (lilac) Random Primers
- (lilac) NEBNext First Strand Synthesis Enzyme Mix
- (brown) NEBNext Strand Specificity Reagent
- (orange) NEBNext Second Strand Synthesis Enzyme Mix
- (orange) NEBNext Second Strand Synthesis Reaction Buffer with dUTP Mix
- (green) NEBNext Ultra II End Prep Enzyme Mix
- (green) NEBNext Ultra II End Prep Reaction Buffer
- (red) NEBNext Ultra II Ligation Master Mix
- (red) NEBNext Ligation Enhancer

- (blue) NEBNext USER[®] Enzyme
 - (blue) NEBNext Ultra II Q5[®] Master Mix
- NEBNext Adaptor Dilution Buffer
 (0.1X) TE Buffer
 Nuclease-free Water

Package 2: Store at room temperature. Do not freeze.

Supplied only with NEBNext Ultra II Directional RNA Library Prep with Sample Purification Beads, NEB #E7765.

NEBNext Sample Purification Beads

Required Materials Not Included

NEBNext Oligo Kit options can be found at <http://www.neb.com/oligos>

Alternatively, customer supplied adaptor and primers can be used, please see: www.neb.com/faq-nonNEB-adaptors

Please note: Separate instructions exist for UNIQUE DUAL INDEX UMI ADAPTORS. Please contact Technical Support at info@neb.com

Magnetic rack (NEB #S1515S), magnetic plate (Alpaqua[®] cat. #A001322) or equivalent
 80% Ethanol (freshly prepared)
 Thermal cycler
 Thin wall 200 µl PCR tubes (For example Tempassure PCR flex-free 8-tube strips USA Scientific #1402-4708)
 Vortex mixer
 Agilent[®] Bioanalyzer[®] or similar fragment analyzer and associated consumables
 Microcentrifuge

For NEB #E7760 only:

SPRIselect[®] Reagent Kit (Beckman Coulter, Inc. #B23317) or AMPure[®] XP Beads (Beckman Coulter, Inc. #A63881)
 In NEB #E7765 beads are included [Sample Purification Beads (NEB #E7767)]

For use with NEBNext Poly(A) mRNA Magnetic Isolation Module:

NEB #E7490 (not included)
 96-well 0.2 ml PCR Plates and Microseal[®] 'B' Adhesive Sealer (BioRad MSB-1001) or 0.2 ml RNase-free tube
 1.5 ml Microcentrifuge tube and NEB #S1506 Magnet stand or equivalent (for washing beads only)

For use with NEBNext Ribosomal Depletion Kit:

NEB #E7400 (not included) Agencourt[®] RNAClean[®] XP Beads (Beckman Coulter, Inc. #A63987)
 In NEB #E7405, beads are included [RNA Sample Purification Beads (NEB #E6351)]

Adaptor trimming sequences:

The NEBNext libraries for Illumina resemble TruSeq libraries and can be trimmed similar to TruSeq:

Read 1 AGATCGGAAGAGCACACGTCTGAACTCCAGTCA
 Read 2 AGATCGGAAGAGCGTCGTGTAGGGAAAGAGTGT

Considerations on Choosing an RNA-seq Library Preparation Method

The library preparation protocol should be chosen based on the goals of the project and quality of the RNA sample. Total cellular RNA is mainly composed of rRNA and often is not of interest. rRNA can be removed from total cellular RNA by one of two common methods. The first method uses oligo d(T) beads, which bind to the poly(A) tail of eukaryotic mRNA. Alternatively, rRNA can be depleted using rRNA specific probes. NEB offers the NEBNext Poly(A) mRNA Magnetic Isolation Module (NEB #E7490) and the NEBNext rRNA Depletion Kit v2 (Human/Mouse/Rat) with or without RNA Sample Purification Beads (NEB #E7400/ #E7405) for the enrichment of non-ribosomal RNA.

In the oligo d(T) approach, only mRNA with poly(A) tails will be enriched; other cellular RNA without a poly(A) tail, such as non-coding RNA or mRNA lacking poly(A) will not bind to the beads. In addition, mRNA from some organisms (e.g., prokaryotes) or degraded RNA (e.g., FFPE RNA) do not have poly(A) tails, and will not be captured by oligo d(T) beads. On the other hand, the probe based rRNA depletion kit will remove the targeted ribosomal RNA, but it will preserve other biologically relevant cellular RNA such as non-coding RNA or mRNA.

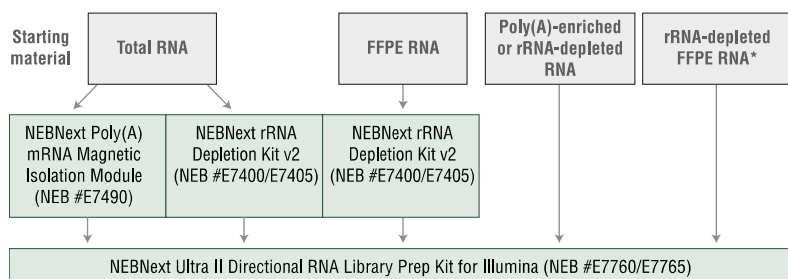
The quality of an RNA sample should also be considered when deciding on a library preparation protocol. The NEBNext Poly(A) mRNA Magnetic Isolation Module should only be used with high quality RNA samples (RIN > 7), since degradation results in a loss of poly(A) tails from mRNA molecules. For partially degraded or heavily degraded samples (e.g., RIN ≤ 7, FFPE RNA), the NEBNext rRNA Depletion Kit should be used. For libraries without any enrichment or depletion of total RNA, use Section 4 for high quality RNA (RIN > 7) or Section 5 for degraded or FFPE RNA (RIN < 7).

Please refer to the product page on NEB.com for FAQs about this product.

NEBNext Ultra II Directional RNA Product Selection Guide

The library preparation protocol should be chosen based on the goals of the project and quality of the RNA sample. Total cellular RNA is mainly composed of rRNA and often is not of interest. rRNA can be removed from total cellular RNA by one of two common methods. The first method uses oligo d(T) beads, which bind to the poly(A) tail of eukaryotic mRNA. Alternatively, rRNA can be depleted using rRNA specific probes. NEB offers the NEBNext Poly(A) mRNA Magnetic Isolation Module (NEB #E7490) and the NEBNext rRNA Depletion Kit v2 (Human/Mouse/Rat) with or without RNA Sample Purification Beads (NEB #E7400/ #E7405) for the enrichment of non-ribosomal RNA.

Figure 1. NEBNext Ultra II Directional RNA Product Selection Guide.



* or Total FFPE RNA when rRNA depletion is not desirable

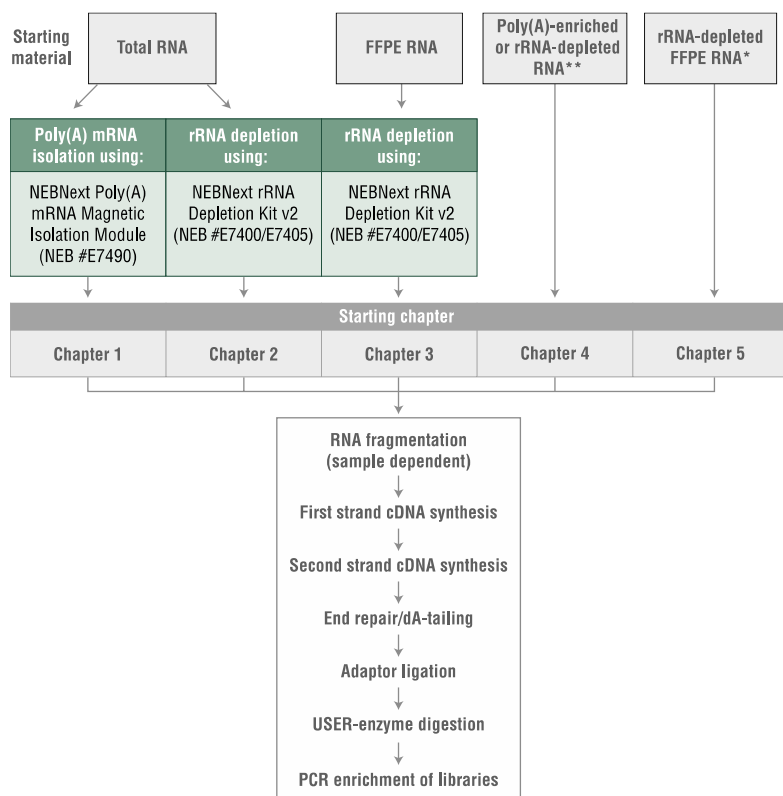
Select the right NEBNext Multiplex Oligos for your experiment at www.neb.com/oligos.

Please note: A separate manual exists for UNIQUE DUAL INDEX UMI ADAPTORS.

NEBNext Ultra II Directional RNA Protocol Selection Guide

Use the following chart to determine the most suitable protocol in this manual. Every Section in this manual contains a different protocol based on the starting material. More detailed information is available at the beginning of each Section. Please read the "RNA Sample Recommendations" and "Input Amount" sections in their entirety before starting the protocol.

Figure 2. NEBNext Ultra II Directional RNA Protocol Selection Guide.



* or Total FFPE RNA when rRNA depletion is not desirable

** any intact or partially fragmented RNA when enrichment is not desirable

Overview

The NEBNext Ultra II Directional RNA Library Prep Kit for Illumina contains the enzymes and buffers required to convert a broad range of input amounts of RNA into high quality directional (strand-specific) libraries for next-generation sequencing on the Illumina platform. The fast, user-friendly workflow has minimal hands-on time and is compatible with poly(A) mRNA enrichment and rRNA depletion methods.

Each kit component must pass rigorous quality control standards, and for each new lot the entire set of reagents is functionally validated together by construction and sequencing of an indexed transcriptome library on the Illumina sequencing platform.

Where larger volumes, customized or bulk packaging are required, we encourage consultation with the Customized Solutions team at NEB. Please complete the NEB Custom Contact Form at www.neb.com/CustomContactForm to learn more.

Section 1

Protocol for use with Non -Indexed adaptor, NEBNext Poly(A) mRNA Magnetic Isolation Module (NEB #E7490) and NEBNext Ultra II Directional RNA Library Prep Kit for Illumina (NEB #E7760, #E7765)

Symbols



This caution sign signifies a step in the protocol that has two paths leading to the same end point but is dependent on a user variable, like the type of RNA input.



This is a point where you can safely stop the protocol and store the samples prior to proceeding to the next step in the protocol.



Colored bullets indicate the cap color of the reagent to be added.

The protocol has been optimized using high quality Universal Human Reference Total RNA.

RNA Sample Requirements

RNA Integrity:

Assess the quality of the Input RNA by running the RNA sample on an Agilent Bioanalyzer® RNA 6000 Nano/Pico Chip. For PolyA mRNA enrichment, high quality RNA with a RIN score > 7 is required.

RNA Sample Requirements:

The RNA sample should be free of salts (e.g., Mg²⁺, or guanidinium salts, divalent cation chelating agents (e.g., EDTA or EGTA) or organics (e.g., phenol or ethanol). RNA must be free of DNA. gDNA is a common contaminant from RNA preps. It may be carried over from the interphase of organic extractions or when the silica matrix of solid phase RNA purification methods is overloaded. If the total RNA sample may contain gDNA contamination, treat the sample with DNase I to remove all traces of DNA (DNase is not provided in this kit). After treatment with DNase I the enzyme should be removed from the sample. Any residual activity of the DNase I may degrade the oligos necessary for the enrichment. DNase I can be removed from the extraction using phenol/chloroform extraction and ethanol precipitation.

Input Amount Requirements

10 ng–1 µg DNA-free total RNA quantified by Qubit® Fluorometer and quality checked by Bioanalyzer.

The protocol is optimized for approximately 200 bp RNA inserts. To generate libraries with longer RNA insert sizes, refer to Appendix A (Section 6) for recommended fragmentation times and size selection conditions.



Keep all the buffers on ice, unless otherwise indicated.

1.1. Preparation of First Strand Reaction Buffer and Random Primer Mix

1.1.1. Prepare the First Strand Synthesis Reaction Buffer and Random Primer Mix in a nuclease-free microcentrifuge tube as follows:

COMPONENT	VOLUME
• (lilac) NEBNext First Strand Synthesis Reaction Buffer	8 µl
• (lilac) Random Primers	2 µl
Nuclease-free Water	10 µl
Total Volume	20 µl

For multiple reactions, a master mix of the reaction components can be prepared on ice before addition to the sample.

You can prepare the first strand synthesis reaction buffer later in the protocol, but it is important that it is ready before the elution in Step 1.2.36. The beads should not be allowed to dry out.

1.1.2. Mix thoroughly by pipetting up and down ten times and proceed directly to mRNA Isolation.

Note: Keep the mix on ice until mRNA is purified. It will be used in Step 1.2.36 and 1.2.39.


1.2. mRNA Isolation, Fragmentation and Priming Starting with Total RNA

- 1.2.1. Dilute the total RNA with nuclease-free water to a final volume of 50 µl in a nuclease-free 0.2 ml PCR tube and keep on ice.
- 1.2.2. To wash the Oligo dT Beads, add the following to a 1.5 ml nuclease-free tube. If preparing multiple libraries, beads for up to 10 samples can be added to a single 1.5 ml tube for subsequent washes (use magnet NEB #S1506 for 1.5 ml tubes). The purpose of this step is to bring the beads from the storage buffer into the binding buffer. The 2X Binding Buffer does not have to be diluted for this step.

COMPONENT	VOLUME PER ONE LIBRARY
Oligo dT Beads d(T) ₂₅	20 µl
• RNA Binding Buffer (2X)	100 µl
Total Volume	120 µl

For multiple reactions, a master mix of the reaction components can be prepared on ice before addition to the sample.

- 1.2.3. Wash the beads by pipetting up and down six times.
- 1.2.4. Place the tube on the magnet and incubate at room temperature until the solution is clear (~2 minutes).
- 1.2.5. Remove and discard all of the supernatant from the tube. Take care not to disturb the beads.
- 1.2.6. Remove the tube from the magnetic rack.
- 1.2.7. Add 100 µl RNA Binding Buffer (2X) to the beads and wash by pipetting up and down six times. If preparing multiple libraries, add 100 µl RNA Binding Buffer (2X) per sample. The Binding Buffer does not have to be diluted.
- 1.2.8. Place the tubes on the magnet and incubate at room temperature until the solution is clear (~2 minutes).
- 1.2.9. Remove and discard the supernatant from the tube. Take care not to disturb the beads.
- 1.2.10. Remove the tube from the magnet and add 50 µl RNA Binding Buffer (2X) to the beads and mix by pipetting up and down until beads are homogenous. If preparing multiple libraries, add 50 µl RNA Binding Buffer (2X) per sample.
- 1.2.11. Add 50 µl beads to each RNA sample from Step 1.2.1. Mix thoroughly by pipetting up and down six times. This first binding step removes most of the non target RNA.
- 1.2.12. Place the tube in a thermal cycler and close the lid. Heat the sample at **65°C for 5 minutes and cool to 4°C with the heated lid set at ≥ 75°C** to denature the RNA and facilitate binding of the mRNA to the beads.
- 1.2.13. Remove the tube from the thermal cycler when the temperature reaches **4°C**.
- 1.2.14. Mix thoroughly by pipetting up and down six times. Place the tube on the bench and incubate at room temperature for 5 minutes to allow the mRNA to bind to the beads.
- 1.2.15. Place the tube on the magnetic rack at room temperature until the solution is clear (~2 minutes).
- 1.2.16. Remove and discard all of the supernatant. Take care not to disturb the beads.
- 1.2.17. Remove the tube from the magnetic rack.
- 1.2.18. Wash the beads by adding 200 µl of Wash Buffer to the tube to remove unbound RNA. Gently pipette the entire volume up and down 6 times to mix thoroughly.
- 1.2.19. Place the tube on the magnetic rack at room temperature until the solution is clear (~2 minutes).
- 1.2.20. Remove and discard all of the supernatant from the tube. Take care not to disturb the beads.
- 1.2.21. Remove the tube from the magnetic rack.
- 1.2.22. Repeat steps 1.2.18.–1.2.21.
- 1.2.23. Add 50 µl of Tris Buffer (provided in NEB #E7490 kit) to each tube. Gently pipette up and down 6 times to mix thoroughly.

- 1.2.24. Place the tube on the thermal cycler. Close the lid and heat the samples at **80°C for 2 minutes, then cool to 25°C with the heated lid set at ≥ 90°C** to do the first elution of the mRNA from the beads.
- 1.2.25. Remove the tube from the thermal cycler when the temperature reaches 25°C.
- 1.2.26. Add 50 µl of RNA Binding Buffer (2X) to the sample to allow the mRNA to re-bind to the beads. Mix thoroughly by gently pipetting up and down six times.
- 1.2.27. Incubate the tube at **room temperature for 5 minutes**.
- 1.2.28. Place the tube on the magnetic rack at room temperature until the solution is clear (~2 minutes).
- 1.2.29. Remove and discard the supernatant from the tube. Take care not to disturb the beads.
- 1.2.30. Remove the tube from the magnetic rack.
- 1.2.31. Wash the beads by adding 200 µl of Wash Buffer. Gently pipette the entire volume up and down 6 times to mix thoroughly.
- 1.2.32. Spin down the tube briefly to collect the liquid from the wall and lid of the tube.
Note: It is important to spin down the tube to prevent carryover of the Wash Buffer in subsequent steps.
- 1.2.33. Place the tube on the magnet at room temperature until the solution is clear (~2 minutes).
- 1.2.34. Remove and discard all of the supernatant from the tube. Take care not to disturb the beads that contains the mRNA.
Note: It is important to remove all of the supernatant to successfully fragment the mRNA in the subsequent steps. Spin down the tube. Place the tube on the magnetic rack and with a 10 µl tip, remove all of the wash buffer. (Caution: Do not disturb beads that contain the mRNA). Avoid letting the beads dry out before adding elution buffer.
- 1.2.35. Remove the tube from the magnetic rack.

Note: The next step provides a fragmentation incubation time resulting in an RNA insert size of ~ 200 nt. For RNA insert sizes > 200 nt, refer to Section 6 (Appendix A) for recommended fragmentation times in Step 1.2.37.
- 1.2.36. To elute the mRNA from the beads and fragment, add 11.5 µl of the First Strand Synthesis Reaction Buffer and Random Primer Mix prepared in Step 1.1.2., pipette up and down six times to resuspend the beads.
- 1.2.37. Incubate the sample in a thermal cycler with the heated lid set at 105°C as follows:
15 minutes at 94°C
Hold at 4°C*
* Immediately transfer the tube to ice for 1 minute as soon as it is cool enough to handle (~65°C)
- 1.2.38. Quickly spin down the tube in a microcentrifuge to collect the liquid from the sides of the tube and place on the magnet right away until the solution is clear (~1–2 minutes).
- 1.2.39. Collect the fragmented mRNA by transferring 10 µl of the supernatant to a nuclease-free 0.2 ml PCR tube.
Note 1: If the supernatant volume recovered is less than 10 µl for any reason, bring the volume up to 10 µl by adding the First Strand Synthesis Reaction Buffer and Random Primer Mix prepared in Step 1.1.2 and continue with the protocol.
Note 2: Avoid transferring any of the magnetic beads.
- 1.2.40. Place the tube on ice and proceed directly to First Strand cDNA Synthesis.

1.3. First Strand cDNA Synthesis

- 1.3.1. Assemble the first strand cDNA synthesis reaction **on ice** by adding the following components into fragmented and primed RNA from Step 1.2.40.

FIRST STRAND cDNA SYNTHESIS REACTION	VOLUME
Fragmented and primed RNA (Step 1.2.40.)	10 μ l
• (brown) NEBNext Strand Specificity Reagent	8 μ l
• (lilac) NEBNext First Strand Synthesis Enzyme Mix	2 μ l
Total Volume	20 μl

For multiple reactions, a master mix of the reaction components can be prepared on ice before addition to the sample.

- 1.3.2. Mix thoroughly by pipetting up and down at least 10 times.



- 1.3.3. Incubate the sample in a preheated thermal cycler with the heated lid set at $\geq 80^{\circ}\text{C}$ as follows:

Note: If you are following recommendations in Appendix A, for longer RNA fragments (creating inserts > 200 bases), increase the incubation at 42°C from 15 minutes to 50 minutes at Step 2.

Step 1: 10 minutes at 25°C

Step 2: 15 minutes at 42°C

Step 3: 15 minutes at 70°C

Step 4: Hold at 4°C

- 1.3.4. Immediately, perform Second Strand cDNA Synthesis.

1.4. Second Strand cDNA Synthesis

- 1.4.1. Assemble the second strand cDNA synthesis reaction on ice by adding the following components into the first strand synthesis reaction product from Step 1.3.3.

SECOND STRAND SYNTHESIS REACTION	VOLUME
First-Strand Synthesis Product (Step 1.3.3.)	20 μ l
• (orange) NEBNext Second Strand Synthesis Reaction Buffer with dUTP Mix	8 μ l
• (orange) NEBNext Second Strand Synthesis Enzyme Mix	4 μ l
Nuclease-free Water	48 μ l
Total Volume	80 μl

For multiple reactions, a master mix of the reaction components can be prepared on ice before addition to the sample.

- 1.4.2. Keeping the tube on ice, mix thoroughly by pipetting the reaction up and down at least 10 times.

- 1.4.3. Incubate in a thermal cycler for **1 hour at 16°C** with the heated lid set at $\leq 40^{\circ}\text{C}$ (or off). Proceed to Purification of Double-stranded cDNA.

1.5. Purification of Double-stranded cDNA using SPRIselect Beads or NEBNext Sample Purification Beads

- 1.5.1. Vortex SPRIselect Beads or NEBNext Sample Purification Beads to resuspend.

- 1.5.2. Add 144 μ l (1.8X) of resuspended beads to the second strand synthesis reaction (~ 80 μ l). Mix well on a vortex mixer or by pipetting up and down at least 10 times.

- 1.5.3. Incubate for at least 5 minutes at room temperature.

- 1.5.4. Briefly spin the tube in a microcentrifuge to collect any sample from the sides of the tube. Place the tube on a magnetic rack to separate beads from the supernatant. After the solution is clear (about 5 minutes), carefully remove and discard the supernatant. Be careful not to disturb the beads, which contain DNA. (**Caution: do not discard beads**).

- 1.5.5. Add 200 μ l of freshly prepared 80% ethanol to the tube while in the magnetic stand. Incubate at room temperature for 30 seconds, and then carefully remove and discard the supernatant.

- 1.5.6. Repeat Step 1.5.5. once for a total of 2 washing steps.

1.5.7. Air dry the beads for up to 5 minutes while the tube is on the magnetic rack with the lid open.

Caution: Do not over-dry the beads. This may result in lower recovery of DNA target. Elute the samples when the beads are still dark brown and glossy looking, but when all visible liquid has evaporated. When the beads turn lighter brown and start to crack they are too dry.

1.5.8. Remove the tube from the magnet. Elute the DNA target from the beads by adding 53 µl 0.1X TE Buffer (provided) to the beads. Mix well on a vortex mixer or by pipetting up and down ten times. Briefly spin the tube and incubate for 2 minutes at room temperature. Place the tube on the magnetic rack until the solution is clear (about 2 minutes).

1.5.9. Remove 50 µl of the supernatant and transfer to a clean nuclease-free PCR tube.

Note: If you need to stop at this point in the protocol, samples can be stored at –20°C.

1.6. End Prep of cDNA Library

1.6.1. Assemble the end prep reaction on ice by adding the following components to second strand synthesis product from Step 1.5.9.

END PREP REACTION	VOLUME
Second Strand cDNA Synthesis Product (Step 1.5.9.)	50 µl
• (green) NEBNext Ultra II End Prep Reaction Buffer	7 µl
• (green) NEBNext Ultra II End Prep Enzyme Mix	3 µl
Total Volume	60 µl

For multiple reactions, a master mix of the reaction components can be prepared on ice before addition to the sample.

1.6.2. Set a 100 µl or 200 µl pipette to 50 µl and then pipette the entire volume up and down at least 10 times to mix thoroughly. Perform a quick spin to collect all liquid from the sides of the tube.

Note: It is important to mix well. The presence of a small amount of bubbles will not interfere with performance.

1.6.3. Incubate the sample in a thermal cycler with the heated lid set at $\geq 75^{\circ}\text{C}$ as follows:

30 minutes at 20°C

30 minutes at 65°C

Hold at 4°C

1.6.4. Proceed immediately to Adaptor Ligation.

1.7. Adaptor Ligation



1.7.1. Dilute the • (red) NEBNext Adaptor* prior to setting up the ligation reaction in ice-cold Adaptor Dilution Buffer and keep the diluted adaptor on ice.

TOTAL RNA INPUT	DILUTION REQUIRED
1,000–250 ng	5-fold dilution in Adaptor Dilution Buffer
249–100 ng	25-fold dilution in Adaptor Dilution Buffer
99–10 ng	100-fold dilution in Adaptor Dilution Buffer

* The NEBNext adaptor is provided in NEBNext oligos kit. NEB has several oligo kit options, which are supplied separately from the library prep kit. Please see www.neb.com/oligos for additional information.

- 1.7.2. Assemble the ligation reaction on ice by adding the following components, in the order given, to the end prep reaction product from Step 1.6.4.

LIGATION REACTION	VOLUME
End Prepped DNA (Step 1.6.4.)	60 μ l
Diluted Adaptor (Step 1.7.1.)	2.5 μ l
• (red) NEBNext Ligation Enhancer	1 μ l
• (red) NEBNext Ultra II Ligation Master Mix	30 μ l
Total Volume	93.5 μl

The Ligation Master Mix and Ligation Enhancer can be mixed ahead of time and is stable for at least 8 hours at 4°C. Do not premix the Ligation Master Mix, Ligation Enhancer and adaptor prior to use in the Adaptor Ligation Step.

- 1.7.3. Set a 100 μ l or 200 μ l pipette to 80 μ l and then pipette the entire volume up and down at least 10 times to mix thoroughly. Perform a quick spin to collect all liquid from the sides of the tube.



Caution: The NEBNext Ultra II Ligation Master Mix is very viscous. Care should be taken to ensure adequate mixing of the ligation reaction, as incomplete mixing will result in reduced ligation efficiency. The presence of a small amount of bubbles will not interfere with performance.

- 1.7.4. Incubate **15 minutes at 20°C** in a thermal cycler with the heated lid off.
- 1.7.5. Add 3 μ l (blue or red) USER Enzyme to the ligation mixture from Step 1.7.4., resulting in total volume of 96.5 μ l.
- 1.7.6. Mix well and incubate at **37°C for 15 minutes** with the heated lid set to $\geq 45^\circ\text{C}$, hold at 4°C. Proceed immediately to Purification of the Ligation Reaction.

1.8. Purification of the Ligation Reaction Using SPRIselect Beads or NEBNext Sample Purification Beads



Note: If you are selecting for larger insert size libraries (> 200 nt) follow the size selection recommendations in Appendix A, Section 6.

- 1.8.1. Add 87 μ l (0.9X) resuspended SPRIselect Beads or NEBNext Sample Purification Beads and mix well on a vortex mixer or by pipetting up and down at least 10 times.
- 1.8.2. Incubate for 10 minutes at room temperature.
- 1.8.3. Quickly spin the tube in a microcentrifuge and place the tube on an appropriate magnetic rack to separate beads from the supernatant. After the solution is clear (~ 5 minutes), discard the supernatant that contain unwanted fragments (**Caution: do not discard beads**).
- 1.8.4. Add 200 μ l of freshly prepared 80% ethanol to the tube while in the magnetic rack. Incubate at room temperature for 30 seconds, and then carefully remove and discard the supernatant.
- 1.8.5. Repeat Step 1.8.4. once for a total of 2 washing steps.
- 1.8.6. Briefly spin the tube and put the tube back in the magnetic rack.
- 1.8.7. Completely remove the residual ethanol and air dry beads for up to 5 minutes while the tube is on the magnetic rack with the lid open.
- Caution: Do not over-dry the beads. This may result in lower recovery of DNA target. Elute the samples when the beads are still dark brown and glossy looking, but when all visible liquid has evaporated. When the beads turn lighter brown and start to crack they are too dry.**
- 1.8.8. Remove the tube from the magnet. Elute DNA target from the beads by adding 17 μ l 0.1X TE (provided) to the beads. Mix well on a vortex mixer or by pipetting up and down. Quickly spin the tube and incubate for 2 minutes at room temperature. Put the tube in the magnetic rack until the solution is clear (about 2 minutes).
- 1.8.9. Without disturbing the bead pellet, transfer 15 μ l of the supernatant to a clean PCR tube and proceed to PCR enrichment.



Note: If you need to stop at this point in the protocol samples can be stored at -20°C .

1.9. PCR Enrichment of Adaptor Ligated DNA



Use Option A for any NEBNext oligos kit where index primers are supplied in tubes. These kits have the forward and reverse primers supplied in separate tubes.

Use Option B for any NEBNext oligos kit where index primers are supplied in a 96-well plate format. These kits have the forward and reverse (i7 and i5) primers combined. Primers are supplied at 10 μ M combined (5 μ M each).

1.9.1. Set up the PCR reaction as described below based on the type of oligos (PCR primers) used.

1.9.1A. Forward and Reverse Primers Separate

COMPONENT	VOLUME PER ONE LIBRARY
Adaptor Ligated DNA (Step 1.8.9.)	15 μ l
• (blue) NEBNext Ultra II Q5 Master Mix	25 μ l
Index (X) Primer/i7 Primer ^{*,**}	5 μ l
Universal PCR Primer/i5 Primer ^{*,**}	5 μ l
Total Volume	50 μl

* NEBNext Oligos must be purchased separately from the library prep kit. Refer to the corresponding NEBNext Oligo kit manual for determining valid barcode combinations.

** Use only one i7 primer/index primer per sample. Use only one i5 primer (or the universal primer for single index kits) per sample

1.9.1B. Forward and Reverse Primers Combined

COMPONENT	VOLUME PER ONE LIBRARY
Adaptor Ligated DNA (Step 1.8.9.)	15 μ l
• (blue) NEBNext Ultra II Q5 Master Mix	25 μ l
Index Primer Mix [*]	10 μ l
Total Volume	50 μl

* NEBNext Oligos must be purchased separately from the library prep kit. Refer to the corresponding NEBNext Oligo kit manual for determining valid barcode combinations.

1.9.2. Mix well by gently pipetting up and down 10 times. Quickly spin the tube in a microcentrifuge.

1.9.3. Place the tube on a thermal cycler with the heated lid set to 105°C and perform PCR amplification using the following PCR cycling conditions (refer to Table 1.9.3A and Table 1.9.3B):

Table 1.9.3A:

CYCLE STEP	TEMP	TIME	CYCLES
Initial Denaturation	98°C	30 seconds	1
Denaturation	98°C	10 seconds	8–16 ^{*,**}
Annealing/Extension	65°C	75 seconds	
Final Extension	65°C	5 minutes	1
Hold	4°C	∞	

* The number of PCR cycles should be adjusted based on RNA input (Table 1.9.3B).

** It is important to limit the number of PCR cycles to avoid overamplification. If overamplification occurs, a second peak ~ 1,000 bp will appear on the Bioanalyzer trace (See Figure 7.2 in the Troubleshooting Guide, Section 7).

Table 1.9.3B: Recommended PCR cycles based on total RNA input amount:

TOTAL RNA INPUT	RECOMMENDED PCR CYCLES
1,000 ng	8–9
100 ng	12–13
10 ng	15–16

Note: PCR cycles are recommended based on high quality Universal Human Reference Total RNA. It may require optimization based on the sample quality to prevent PCR over-amplification.

1.10. Purification of the PCR Reaction using SPRIselect Beads or NEBNext Sample Purification Beads

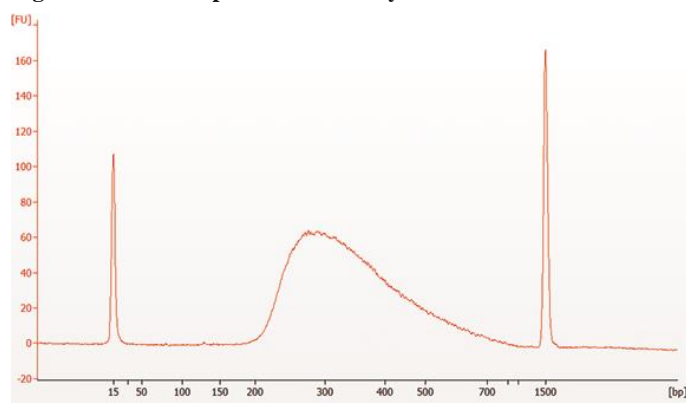
- 1.10.1. Vortex SPRIselect Beads or NEBNext Sample Purification Beads to resuspend.
- 1.10.2. Add 45 μ l (0.9X) of resuspended beads to the PCR reaction (~ 50 μ l). Mix well on a vortex mixer or by pipetting up and down at least 10 times.
- 1.10.3. Incubate for up to 5 minutes at room temperature.
- 1.10.4. Quickly spin the tube in a microcentrifuge and place the tube on an appropriate magnetic rack to separate beads from the supernatant. After the solution is clear (about 5 minutes), carefully remove and discard the supernatant. Be careful not to disturb the beads that contain DNA targets.
- 1.10.5. Add 200 μ l of freshly prepared 80% ethanol to the tube while in the magnetic rack. Incubate at room temperature for 30 seconds, and then carefully remove and discard the supernatant.
- 1.10.6. Repeat Step 1.10.5. once for a total of 2 washing steps.
- 1.10.7. Air dry the beads for up to 5 minutes while the tube is on the magnetic rack with the lid open.
Caution: Do not over-dry the beads. This may result in lower recovery of the DNA target. Elute the samples when the beads are still dark brown and glossy looking, but when all visible liquid has evaporated. When the beads turn lighter brown and start to crack they are too dry.
- 1.10.8. Remove the tube from the magnetic rack. Elute the DNA target from the beads by adding 23 μ l 0.1X TE (provided) to the beads. Mix well on a vortex mixer or by pipetting up and down ten times. Quickly spin the tube in a microcentrifuge and incubate for 2 minutes at room temperature. Place the tube in the magnetic rack until the solution is clear (about 2 minutes).
- 1.10.9. Transfer 20 μ l of the supernatant to a clean PCR tube, and store at -20°C .

1.11. Assess Library Quality on an Agilent Bioanalyzer DNA Chip

- 1.11.1. Run 1 μ l library on a DNA 1000 chip. If the library yield is too low to quantify on this chip, please run the samples on a DNA High Sensitivity chip. A dilution may be necessary for running on a Bioanalyzer High Sensitivity DNA chip.
- 1.11.2. Check that the electropherogram shows a narrow distribution with a peak size approximately 300 bp.

Note: If a peak at ~ 80 bp (primers) or 128 bp (adaptor-dimer) is visible in the Bioanalyzer traces, bring up the sample volume (from Step 1.10.9) to 50 μ l with 0.1X TE buffer and repeat the SPRIselect Bead or NEBNext Sample Purification Bead Cleanup Step (Section 1.10). Adaptor dimer peak range is derived from values observed on BioAnalyzer. Peaks may appear shifted on other library analysis instruments such as TapeStation or Fragment Analyzer.

Figure 1.11.1. Example of RNA library size distribution on a Bioanalyzer.



Section 2

Protocol for use with Non- Indexed Adaptor, NEBNext rRNA Depletion Kit v2 (Human/Mouse/Rat) (NEB #E7400, #E7405) and NEBNext Ultra II Directional RNA Library Prep Kit for Illumina (NEB #E7760, #E7765)

Symbols



This caution sign signifies a step in the protocol that has two paths leading to the same end point but is dependent on a user variable, like the type of RNA input.



This is a point where you can safely stop the protocol and store the samples prior to proceeding to the next step in the protocol.

Colored bullets indicate the cap color of the reagent to be added.

Keep all of the buffers on ice, unless otherwise indicated.

RNA Sample Requirements

RNA Integrity:

Assess the quality of the input RNA by running the RNA sample on an Agilent Bioanalyzer RNA 6000 Nano/Pico Chip to determine the RNA Integrity Number (RIN). For intact (RIN > 7) or partially degraded RNA samples (RIN = 2 to 7) follow the library preparation protocol in Section 2 (current section) or 4. For highly degraded samples (e.g., FFPE) which do not require fragmentation, follow the library preparation protocol in Section 3 or 5.

RNA Purity:

The RNA sample should be free of salts (e.g., Mg²⁺, or guanidinium salts) or organics (e.g., phenol and ethanol). RNA must be free of DNA. gDNA is a common contaminant from RNA preps. It may be carried over from the interphase of organic extractions or when the silica matrix of solid phase RNA purification methods is overloaded. If the total RNA sample may contain gDNA contamination, treat the sample with DNase I to remove all traces of DNA (not provided in this kit). After treatment with DNase I the enzyme should be removed from the sample. Any residual activity of DNase I will degrade the single stranded DNA probes necessary for the ribosomal depletion. DNase I can be removed from the extraction using phenol/ chloroform extraction and ethanol precipitation. Prior to depletion the RNA must be in nuclease free water. Some products, e.g. TURBO DNA-free™ Kit TURBO™ DNase Treatment and Removal Reagents do not produce RNA in nuclease free water and are not compatible with NEBNext RNA depletion. Any residual activity of DNase I will degrade the single stranded DNA probes necessary for the ribosomal depletion.

Input Amount:

10 ng–1 µg intact or partially degraded total RNA (DNA free) in a maximum of 11 µl of nuclease-free water, quantified by an RNA-specific dye-assisted fluorometric method (e.g., Qubit, RiboGreen), and quality checked by Bioanalyzer.

2.1. Probe Hybridization to RNA

- 2.1.1. Dilute 10 ng–1 µg of total RNA with Nuclease-free Water to a final volume of 11 µl in a PCR tube. Keep the RNA on ice.
- 2.1.2. Assemble the following RNA/Probe hybridization reaction **on ice**:

RNA/PROBE HYBRIDIZATION REACTION	VOLUME
Total RNA in Nuclease-free Water (10 ng–1 µg)	11 µl
○ (white) NEBNext v2 rRNA Depletion Solution	2 µl
○ (white) NEBNext Probe Hybridization Buffer	2 µl
Total Volume	15 µl

For multiple reactions, a master mix of the reaction components can be prepared on ice before addition to the sample.

- 2.1.3. Mix thoroughly by pipetting up and down at least 10 times. **Note: It is crucial to mix well at this step.**
- 2.1.4. Briefly spin down the tube in a microcentrifuge to collect the liquid from the side of the tube.

- 2.1.5. Place tube in a pre-heated thermal cycler and run the following program with the heated lid set to 105°C. This will take approximately 15–20 minutes to complete.

TEMPERATURE	TIME
95°C	2 minutes
Ramp down to 22°C	0.1°C/sec
22°C	5 minutes
Hold at 4°C	

- 2.1.6. Briefly spin down the tube in a microcentrifuge and place on ice. Proceed immediately to the RNase H Digestion.

2.2. RNase H Digestion

- 2.2.1. Assemble the following RNase H digestion reaction **on ice**:

RNASE H DIGESTION REACTION	VOLUME
Hybridized RNA (Step 2.1.6.)	15 µl
o (white) RNase H Reaction Buffer	2 µl
o (white) NEBNext Thermostable RNase H	2 µl
Nuclease-free Water	1 µl
Total Volume	20 µl

For multiple reactions, a master mix of the reaction components can be prepared on ice before addition to the sample.

- 2.2.2. Mix thoroughly by pipetting up and down at least 10 times.
- 2.2.3. Briefly spin down the tube in a microcentrifuge.
- 2.2.4. Incubate in a pre-heated thermal cycler for **30 minutes at 50°C** with the lid set to 55°C and hold at 4°C.
- 2.2.5. Briefly spin down the tube in a microcentrifuge and place on ice. Proceed immediately to DNase I Digestion.

2.3. DNase I Digestion

- 2.3.1. Assemble the following DNase I digestion reaction **on ice**:

DNASE I DIGESTION REACTION	VOLUME
RNase H treated RNA (Step 2.2.5.)	20 µl
o (white) DNase I Reaction Buffer	5 µl
o (white) NEBNext DNase I (RNase-free)	2.5 µl
Nuclease-free Water	22.5 µl
Total Volume	50 µl

For multiple reactions, a master mix of the reaction components can be prepared on ice before addition to the sample.

- 2.3.2. Mix thoroughly by pipetting up and down at least 10 times.
- 2.3.3. Briefly spin down the tube in a microcentrifuge.
- 2.3.4. Incubate in a pre-heated thermal cycler for **30 minutes at 37°C** with the heated lid set to 40°C (or off) and hold at 4°C.
- 2.3.5. Briefly spin down the tube in a microcentrifuge and place on ice. Proceed immediately to RNA Purification.

2.4. RNA Purification using Agencourt RNAClean XP Beads or NEBNext RNA Sample Purification Beads

- 2.4.1. Vortex the Agencourt RNAClean XP Beads or NEBNext RNA Sample Purification Beads to resuspend.
- 2.4.2. Add **90 µl (1.8X)** beads to the RNA sample from Step 2.3.5. and mix thoroughly by pipetting up and down at least 10 times.
- 2.4.3. Incubate for **15 minutes on ice** to bind RNA to the beads.
- 2.4.4. Place the tube on a magnetic rack to separate the beads from the supernatant.
- 2.4.5. After the solution is clear (about 5 minutes), carefully remove and discard the supernatant. Be careful not to disturb the beads which contain the RNA.

- 2.4.6. Add 200 μ l of freshly prepared 80% ethanol to the tube while in the magnetic rack. Incubate at room temperature for 30 seconds and then carefully remove and discard the supernatant. Be careful not to disturb the beads which contain the RNA.
- 2.4.7. Repeat Step 2.4.6. once for a total of two washes.
- 2.4.8. Completely remove residual ethanol and air dry the beads for up to 5 minutes while the tube is on the magnetic rack with the lid open.
- Caution: Do not over-dry the beads. This may result in lower recovery of RNA target. Elute the samples when the beads are still dark brown and glossy looking, but when all visible liquid has evaporated. When the beads turn lighter brown and start to crack they are too dry.**
- 2.4.9. Remove the tube from the magnetic rack. Elute the RNA from the beads by adding **7 μ l of Nuclease-free Water**. Mix thoroughly by pipetting up and down at least 10 times and briefly spin the tube.
- 2.4.10. Incubate for 2 minutes at room temperature.
- 2.4.11. Place the tube on the magnetic rack until the solution is clear (~ 2 minutes).
- 2.4.12. Remove 5 μ l of the supernatant containing RNA and transfer to a nuclease-free tube.
- 2.4.13. Place the tube on ice and proceed to RNA Fragmentation and Priming.



Note: If you need to stop at this point in the protocol samples can be stored at -80°C .

2.5. RNA Fragmentation and Priming



RNA fragmentation is only required for intact or partially degraded RNA. Recommended fragmentation times can be found in Tables 1 and 2.

- 2.5.1. Assemble the following fragmentation and priming reaction **on ice**:

FRAGMENTATION AND PRIMING REACTION	VOLUME
Ribosomal RNA Depleted Sample (Step 2.4.13.)	5 μ l
• (lilac) NEBNext First Strand Synthesis Reaction Buffer	4 μ l
• (lilac) Random Primers	1 μ l
Total Volume	10 μl

For multiple reactions, a master mix of the reaction components can be prepared on ice before addition to the sample.

- 2.5.2. Mix thoroughly by pipetting up and down ten times.
- 2.5.3. Place the tube in a thermal cycler and incubate as follows:

Incubate at 94°C , with heated lid set at 105°C

Hold at 4°C

Follow the recommendations in Tables 1 and 2 for libraries with inserts ~200 nt. If ribosomal RNA peaks are present, suggesting higher quality, follow recommendations in Table 1. If ribosomal peaks are not present, then follow the DV200 recommendations in Table 2.

Table 1. Suggested fragmentation times (at 94°C) based on RIN value of RNA input.

RNA TYPE	RIN	FRAG. TIME
Intact RNA	≥ 7	8–15 mins
Partially Degraded RNA	2–6	8 mins

Table 2. Suggested fragmentation times (at 94°C) based on DV200 of RNA input.

RNA TYPE	DV200	FRAG. TIME
Partially Degraded RNA	DV200 between 30 and 70	5 mins
Highly Degraded RNA	DV200 \leq 30	5 mins*

*Results may vary due to the high degradation level of these samples.

Note: Refer to Appendix A (Section 6) for fragmentation conditions if you are preparing libraries with large inserts (> 200 bp). Conditions in Appendix A only apply for intact RNA.

2.5.4. Immediately transfer the tube to ice and proceed to First Strand cDNA Synthesis.

2.6. First Strand cDNA Synthesis

2.6.1. Assemble the first strand synthesis reaction **on ice** by adding the following components to the fragmented and primed RNA from Step 2.5.4.:

FIRST STRAND SYNTHESIS REACTION	VOLUME
Fragmented and primed RNA (Step 2.5.4.)	10 μ l
• (brown) NEBNext Strand Specificity Reagent	8 μ l
• (lilac) NEBNext First Strand Synthesis Enzyme Mix	2 μ l
Total Volume	20 μl

For multiple reactions, a master mix of the reaction components can be prepared on ice before addition to the sample.

2.6.2. Mix thoroughly by pipetting up and down ten times.



2.6.3. Incubate the sample in a preheated thermal cycler with the heated lid set at $\geq 80^\circ\text{C}$ as follows:

Note: If you are following recommendations in Appendix A (Section 6), for libraries with longer inserts (> 200 bases), increase the incubation at 42°C from 15 minutes to 50 minutes at Step 2 below.

Step 1: 10 minutes at 25°C

Step 2: 15 minutes at 42°C

Step 3: 15 minutes at 70°C

Step 4: Hold at 4°C

2.6.4. Proceed directly to Second Strand cDNA Synthesis.

2.7. Second Strand cDNA Synthesis

2.7.1. Assemble the second strand cDNA synthesis reaction on ice by adding the following components into the first strand synthesis product from Step 2.6.3.

SECOND STRAND SYNTHESIS REACTION	VOLUME
First-Strand Synthesis Product (Step 2.6.3.)	20 μ l
• (orange) NEBNext Second Strand Synthesis Reaction Buffer with dUTP Mix	8 μ l
• (orange) NEBNext Second Strand Synthesis Enzyme Mix	4 μ l
Nuclease-free Water	48 μ l
Total Volume	80 μl

For multiple reactions, a master mix of the reaction components can be prepared on ice before addition to the sample.

2.7.2. Keeping the tube on ice, mix thoroughly by pipetting up and down at least 10 times.

2.7.3. Incubate in a thermal cycler for **1 hour at 16°C** with the heated lid set at $\leq 40^\circ\text{C}$ (or off).

2.7.4. We recommend proceeding to the cleanup step.

2.8. Purification of Double-stranded cDNA Using SPRIselect Beads or NEBNext Sample Purification Beads

- 2.8.1. Vortex SPRIselect Beads or NEBNext Sample Purification Beads to resuspend.
- 2.8.2. Add 144 μl (1.8X) of resuspended beads to the second strand synthesis reaction ($\sim 80 \mu\text{l}$). Mix well on a vortex mixer or by pipetting up and down at least 10 times.
- 2.8.3. Incubate for 5 minutes at room temperature.
- 2.8.4. Briefly spin the tube in a microcentrifuge to collect any sample on the sides of the tube. Place the tube on a magnet to separate beads from the supernatant. After the solution is clear (about 5 minutes), carefully remove and discard the supernatant. Be careful not to disturb the beads, which contain DNA. (**Caution: do not discard beads**).
- 2.8.5. Add 200 μl of freshly prepared 80% ethanol to the tube while in the magnetic rack. Incubate at room temperature for 30 seconds, and then carefully remove and discard the supernatant.
- 2.8.6. Repeat Step 2.8.5 once for a total of 2 washing steps.
- 2.8.7. Air dry the beads for up to 5 minutes while the tube is on the magnetic rack with lid open.
Caution: Do not over-dry the beads. This may result in lower recovery of DNA target. Elute the samples when the beads are still dark brown and glossy looking, but when all visible liquid has evaporated. When the beads turn lighter brown and start to crack they are too dry.
- 2.8.8. Remove the tube from the magnetic rack. Elute the DNA from the beads by adding 53 μl 0.1X TE Buffer (provided) to the beads. Mix well on a vortex mixer or by pipetting up and down at least 10 times. Quickly spin the tube and incubate for 2 minutes at room temperature. Place the tube on the magnetic rack until the solution is clear (about 2 minutes).
- 2.8.9. Remove 50 μl of the supernatant and transfer to a clean nuclease-free PCR tube.



Note: If you need to stop at this point in the protocol samples can be stored at -20°C .

2.9. End Prep of cDNA Library

- 2.9.1. Assemble the end prep reaction on ice by adding the following components to the second strand synthesis product from Step 2.8.9.

END PREP REACTION	VOLUME
Second Strand cDNA Synthesis Product (Step 2.8.9.)	50 μl
• (green) NEBNext Ultra II End Prep Reaction Buffer	7 μl
• (green) NEBNext Ultra II End Prep Enzyme Mix	3 μl
Total Volume	60 μl

For multiple reactions, a master mix of the reaction components can be prepared on ice before addition to the sample. If a master mix is made, add 10 μl of master mix to 50 μl of cDNA for the End Prep reaction.

- 2.9.2. Set a 100 μl or 200 μl pipette to 50 μl and then pipette the entire volume up and down at least 10 times to mix thoroughly. Perform a quick spin to collect all liquid from the sides of the tube.

Note: It is important to mix well. The presence of a small amount of bubbles will not interfere with performance.

- 2.9.3. Incubate the sample in a thermal cycler with the heated lid set at $\geq 75^{\circ}\text{C}$ as follows.
30 minutes at 20°C
30 minutes at 65°C
Hold at 4°C .
- 2.9.4. Proceed immediately to Adaptor Ligation.

2.10. Adaptor Ligation



- 2.10.1. Dilute the ● (red) NEBNext Adaptor* prior to setting up the ligation reaction in ice-cold Adaptor Dilution Buffer and keep the adaptor on ice.

TOTAL RNA INPUT	DILUTION REQUIRED
1,000–101 ng	5-fold dilution in Adaptor Dilution Buffer
100–10 ng	25-fold dilution in Adaptor Dilution Buffer

* The NEBNext adaptor is provided in NEBNext oligos kit. NEB has several oligo kit options, which are supplied separately from the library prep kit.

- 2.10.2. Assemble the ligation reaction **on ice** by adding the following components, in the order given, to the end prep reaction product from Step 2.9.4.

LIGATION REACTION	VOLUME
End Prepped DNA (Step 2.9.4.)	60 µl
Diluted Adaptor (Step 2.10.1.)	2.5 µl
● (red) NEBNext Ligation Enhancer	1 µl
● (red) NEBNext Ultra II Ligation Master Mix	30 µl
Total Volume	93.5 µl

Note: The Ligation Master Mix and Ligation Enhancer can be mixed ahead of time and is stable for at least 8 hours at 4°C. Do not premix the Ligation Master Mix, Ligation Enhancer and adaptor prior to use in the Adaptor Ligation Step.

- 2.10.3. Set a 100 µl or 200 µl pipette to 80 µl and then pipette the entire volume up and down at least 10 times to mix thoroughly. Perform a quick spin to collect all liquid from the sides of the tube.

Caution: The NEBNext Ultra II Ligation Master Mix is very viscous. Care should be taken to ensure adequate mixing of the ligation reaction, as incomplete mixing will result in reduced ligation efficiency. The presence of a small amount of bubbles will not interfere with performance.

- 2.10.4. Incubate **15 minutes at 20°C** in a thermal cycler with the heated lid off.
- 2.10.5. Add **3 µl (blue or red) USER Enzyme** to the ligation mixture from Step 2.10.4., resulting in total volume of 96.5 µl.
- 2.10.6. Mix well and incubate at **37°C for 15 minutes** with the heated lid set to $\geq 45^{\circ}\text{C}$, hold at 4°C. Proceed immediately to Purification of the Ligation Reaction.

2.11. Purification of the Ligation Reaction Using SPRIselect Beads or NEBNext Sample Purification Beads



Note: If you are selecting for libraries with larger insert size (> 200 nt) follow the size selection recommendations in Appendix A, Section 6.

- 2.11.1. Add **87 µl (0.9X)** resuspended SPRIselect Beads or NEBNext Sample Purification Beads and mix well on a vortex mixer or by pipetting up and down at least 10 times.
- 2.11.2. Incubate for **10 minutes** at room temperature.
- 2.11.3. Quickly spin the tube in a microcentrifuge and place the tube on an appropriate magnetic rack to separate beads from the supernatant. After the solution is clear (~ 5 minutes), discard the supernatant that contains unwanted fragments. (**Caution: do not discard beads**).
- 2.11.4. Add **200 µl** of freshly prepared 80% ethanol to the tube while in the magnetic rack. Incubate at room temperature for 30 seconds, and then carefully remove and discard the supernatant.
- 2.11.5. Repeat Step 2.11.4. once for a total of 2 washing steps.
- 2.11.6. Briefly spin the tube and put the tube back in the magnetic rack.
- 2.11.7. Completely remove the residual ethanol and air dry beads for **up to 5 minutes** while the tube is on the magnetic rack with the lid open.

Caution: Do not over-dry the beads. This may result in lower recovery of DNA target. Elute the samples when the beads are still dark brown and glossy looking, but when all visible liquid has evaporated. When the beads turn lighter brown and start to crack they are too dry.

- 2.11.8. Remove the tube from the magnetic rack. Elute DNA target from the beads by adding 17 µl 0.1X TE (provided) to the beads. Mix well on a vortex mixer or by pipetting up and down. Quickly spin the tube and incubate for 2 minutes at room temperature. Put the tube in the magnet until the solution is clear (about 2 minutes).
- 2.11.9. Without disturbing the bead pellet, transfer 15 µl of the supernatant to a clean PCR tube and proceed to PCR enrichment.
- Note: If you need to stop at this point in the protocol samples can be stored at –20°C.**

2.12. PCR Enrichment of Adaptor Ligated DNA



Use Option A for any NEBNext oligos kit where index primers are supplied in tubes. These kits have the forward and reverse primers supplied in separate tubes.

Use Option B for any NEBNext oligos kit where index primers are supplied in a 96-well plate format. These kits have the forward and reverse (i7 and i5) primers combined. Primers are supplied at 10 µM combined (5 µM each).

- 2.12.1. Set up the PCR reaction as described below based on the type of oligos (PCR primers) used.

2.12.1A. Forward and Reverse Primers Separate

COMPONENT	VOLUME PER ONE LIBRARY
Adaptor Ligated DNA (Step 2.11.9.)	15 µl
• (blue) NEBNext Ultra II Q5 Master Mix	25 µl
Index (X) Primer/i7 Primer ^{*,**}	5 µl
Universal PCR Primer/i5 Primer ^{*,**}	5 µl
Total Volume	50 µl

* NEBNext Oligos must be purchased separately from the library prep kit. Refer to the corresponding NEBNext Oligo kit manual for determining valid barcode combinations.

** Use only one i7 primer/ index primer per sample. Use only one i5 primer (or the universal primer for single index kits) per sample.

2.12.1B. Forward and Reverse Primers Combined

COMPONENT	VOLUME PER ONE LIBRARY
Adaptor Ligated DNA (Step 2.11.9.)	15 µl
• (blue) NEBNext Ultra II Q5 Master Mix	25 µl
Index Primer Mix*	10 µl
Total Volume	50 µl

* NEBNext Oligos must be purchased separately from the library prep kit. Refer to the corresponding NEBNext Oligo kit manual for determining valid barcode combinations.

- 2.12.2. Mix well by gently pipetting up and down 10 times. Quickly spin the tube in a microcentrifuge.

- 2.12.3. Place the tube on a thermal cycler with the heated lid set to 105°C and perform PCR amplification using the following PCR cycling conditions (refer to Table 2.12.3A and Table 2.12.3B):

Table 2.12.3A:

CYCLE STEP	TEMP	TIME	CYCLES
Initial Denaturation	98°C	30 seconds	1
Denaturation	98°C	10 seconds	7–16 ^{*,**}
Annealing/Extension	65°C	75 seconds	
Final Extension	65°C	5 minutes	1
Hold	4°C	∞	

* The number of PCR cycles should be adjusted based on RNA input.

** It is important to limit the number of PCR cycles to avoid overamplification. If overamplification occurs, a second peak ~ 1,000 bp will appear on the Bioanalyzer trace (See Figure 7.2 in the Troubleshooting Guide, Section 7).

Table 2.12.3B: Recommended PCR cycles based on total RNA input amount:

TOTAL RNA INPUT	RECOMMENDED PCR CYCLES
1,000 ng	7–8
100 ng	11–12
10 ng	14–15

Note: PCR cycles are recommended based on high quality Universal Human Reference Total RNA. It may require optimization based on the sample quality to prevent PCR over-amplification.

2.13. Purification of the PCR Reaction using SPRIselect Beads or NEBNext Sample Purification Beads

- 2.13.1. Vortex SPRIselect Beads or NEBNext Sample Purification Beads to resuspend.
- 2.13.2. Add 45 μ l (0.9X) of resuspended beads to the PCR reaction (~ 50 μ l). Mix well on a vortex mixer or by pipetting up and down at least 10 times.
- 2.13.3. Incubate for 5 minutes at room temperature.
- 2.13.4. Quickly spin the tube in a microcentrifuge and place the tube on an appropriate magnetic rack to separate beads from the supernatant. After the solution is clear (about 5 minutes), carefully remove and discard the supernatant. Be careful not to disturb the beads that contain DNA targets. (**Caution: do not discard beads**).
- 2.13.5. Add 200 μ l of freshly prepared 80% ethanol to the tube while in the magnetic rack. Incubate at room temperature for 30 seconds, and then carefully remove and discard the supernatant.
- 2.13.6. Repeat Step 2.13.5. once for a total of 2 washing steps.
- 2.13.7. Air dry the beads for up to 5 minutes while the tube is on the magnetic rack with the lid open.

Caution: Do not over-dry the beads. This may result in lower recovery of DNA target. Elute the samples when the beads are still dark brown and glossy looking, but when all visible liquid has evaporated. When the beads turn lighter brown and start to crack they are too dry.

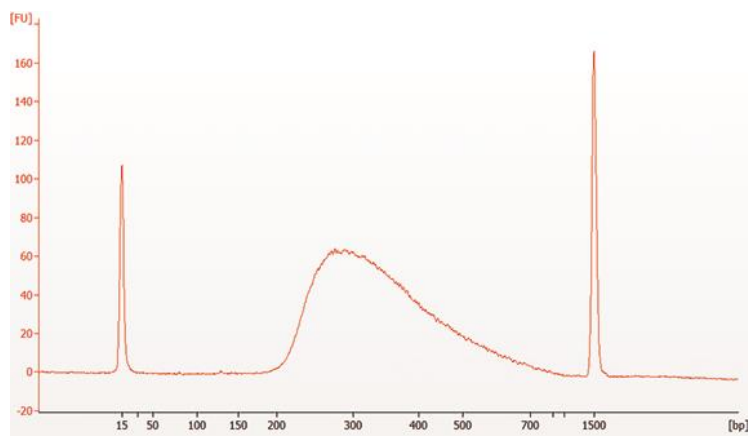
- 2.13.8. Remove the tube from the magnetic rack. Elute the DNA target from the beads by adding 23 μ l 0.1X TE (provided) to the beads. Mix well on a vortex mixer or by pipetting up and down ten times. Quickly spin the tube in a microcentrifuge and incubate for 2 minutes at room temperature. Place the tube in the magnetic rack until the solution is clear (about 2 minutes).
- 2.13.9. Transfer 20 μ l of the supernatant to a clean PCR tube, and store at -20°C .

2.14. Assess Library Quality on an Agilent Bioanalyzer DNA Chip

- 2.14.1. Run 1 μ l library on a DNA 1000 chip. If the library yield is too low to quantify on this chip, please run the samples on a DNA High Sensitivity chip. A dilution may be necessary for running on a Bioanalyzer High Sensitivity DNA Chip.
- 2.14.2. Check that the electropherogram shows a narrow distribution with a peak size approximately 300 bp.

Note: If a peak at ~ 80 bp (primers) or 128 bp (adaptor-dimer) is visible in the Bioanalyzer traces, bring up the sample volume (from Step 2.13.9.) to 50 μ l with 0.1X TE buffer and repeat the SPRIselect Bead or NEBNext Sample Purification Bead Cleanup Step (Section 2.13). Adaptor dimer peak range is derived from values observed on BioAnalyzer. Peaks may appear shifted on other library analysis instruments such as TapeStation or Fragment Analyzer.

Figure 2.14.1 Example of RNA library size distribution on a Bioanalyzer.



Section 3

Protocol for use with FFPE RNA, Non-Indexed Adaptor, NEBNext rRNA Depletion Kit v2 (Human/Mouse/Rat) (NEB #E7400, #E7405) and NEBNext Ultra II Directional RNA Library Prep Kit for Illumina (NEB #E7760, #E7765)

Symbols



This caution sign signifies a step in the protocol that has two paths leading to the same end point but is dependent on a user variable, like the type of RNA input.



This is a point where you can safely stop the protocol and store the samples prior to proceeding to the next step in the protocol.

•
Colored bullets indicate the cap color of the reagent to be added.

Keep all of the buffers on ice, unless otherwise indicated.

The protocol has been optimized using fragmented high quality Universal Human Reference Total RNA and FFPE RNA.

RNA Sample Requirements

RNA Integrity:

Assess the quality of the input RNA by running the RNA sample on an Agilent Bioanalyzer RNA 6000 Nano/Pico Chip to determine the RNA Integrity Number (RIN). RNA with different RIN values require different fragmentation times or no fragmentation at all.

For intact (RIN > 7) or partially degraded RNA samples (RIN = 2 to 7) follow the library preparation protocol in Section 2 or 4. For highly degraded samples (RIN= 1 or 2) (e.g., FFPE) which do not require fragmentation, follow the library preparation protocol in Section 3 (current section) or 5.

RNA Purity:

The RNA sample should be free of salts (e.g., Mg²⁺, or guanidinium salts) or organics (e.g., phenol and ethanol). RNA must be free of DNA. gDNA is a common contaminant from RNA preps. It may be carried over from the interphase of organic extractions or when the silica matrix of solid phase RNA purification methods is overloaded. If the total RNA sample may contain gDNA contamination, treat the sample with DNase I to remove all traces of DNA (not provided in this kit). After treatment with DNase I the enzyme should be removed from the sample. Any residual activity of DNase I will degrade the single stranded DNA probes necessary for the ribosomal depletion. DNase I can be removed from the extraction using phenol/ chloroform extraction and ethanol precipitation. Prior to depletion the RNA must be in nuclease free water. Some products, e.g. TURBO DNA-free™ Kit TURBO™ DNase Treatment and Removal Reagents do not produce RNA in nuclease free water and are not compatible with NEBNext RNA depletion.

Input Amount:

10–100 ng degraded (e.g., FFPE) total RNA (DNA free) in a maximum of 11 µl of nuclease-free water, quantified by an RNA-specific dye-assisted fluorometric method (e.g., Qubit, RiboGreen), and quality checked by Bioanalyzer.

3.1. Probe Hybridization to RNA

- 3.1.1. Dilute 10–100 ng of total RNA with Nuclease-free Water to a final volume of 11 µl in a PCR tube. Keep the RNA on ice.
- 3.1.2. Assemble the following RNA/Probe hybridization reaction **on ice**:

RNA/PROBE HYBRIDIZATION REACTION	VOLUME
Total RNA in Nuclease-free Water (10–100 ng)	11 µl
○ (white) NEBNext v2 rRNA Depletion Solution	2 µl
○ (white) NEBNext Probe Hybridization Buffer	2 µl
Total Volume	15 µl

For multiple reactions, a master mix of the reaction components can be prepared on ice before addition to the sample.

- 3.1.3. Mix thoroughly by pipetting up and down at least 10 times. **Note: It is crucial to mix well at this step.**
- 3.1.4. Briefly spin down the tube in a microcentrifuge to collect the liquid from the side of the tube.

- 3.1.5. Place tube in a pre-heated thermal cycler and run the following program with the heated lid set to 105°C. This will take approximately 15–20 minutes to complete.

TEMPERATURE	TIME
95°C	2 minutes
Ramp down to 22°C	0.1°C/sec
22°C	5 minutes
Hold at 4°C	

- 3.1.6. Briefly spin down the tube in a microcentrifuge and place on ice. Proceed immediately to RNase H Digestion.

3.2. RNase H Digestion

- 3.2.1. Assemble the following RNase H digestion reaction **on ice**:

RNASE H DIGESTION REACTION	VOLUME
Hybridized RNA (Step 3.1.6.)	15 µl
◦ (white) RNase H Reaction Buffer	2 µl
◦ (white) NEBNext Thermostable RNase H	2 µl
Nuclease-free Water	1 µl
Total Volume	20 µl

For multiple reactions, a master mix of the reaction components can be prepared on ice before addition to the sample.

- 3.2.2. Mix thoroughly by pipetting up and down at least 10 times.
- 3.2.3. Briefly spin down the tube in a microcentrifuge.
- 3.2.4. Incubate in a pre-heated thermal cycler for **30 minutes at 50°C** with the lid set to 55°C, hold at 4°C.
- 3.2.5. Briefly spin down the tube in a microcentrifuge and place on ice. Proceed immediately to DNase I Digestion.

3.3. DNase I Digestion

- 3.3.1. Assemble the following DNase I digestion reaction **on ice**:

DNASE I DIGESTION REACTION	VOLUME
RNase H treated RNA (Step 3.2.5.)	20 µl
◦ (white) DNase I Reaction Buffer	5 µl
◦ (white) NEBNext DNase I (RNase-free)	2.5 µl
Nuclease-free Water	22.5 µl
Total Volume	50 µl

For multiple reactions, a master mix of the reaction components can be prepared on ice before addition to the sample.

- 3.3.2. Mix thoroughly by pipetting up and down at least 10 times.
- 3.3.3. Briefly spin down the tube in a microcentrifuge.
- 3.3.4. Incubate in a pre-heated thermal cycler for **30 minutes at 37°C** with the heated lid set to 40°C (or off) and hold at 4°C.
- 3.3.5. Briefly spin down the tube in a microcentrifuge and place on ice. Proceed immediately to RNA Purification.

3.4. RNA Purification using Agencourt RNAClean XP Beads or NEBNext RNA Sample Purification Beads

- 3.4.1. Vortex the Agencourt RNAClean XP Beads or NEBNext RNA Sample Purification Beads to resuspend.
- 3.4.2. Add **90 µl (1.8X)** beads to the RNA sample from Step 3.3.5. and mix thoroughly by pipetting up and down at least 10 times.
- 3.4.3. Incubate for **15 minutes on ice** to bind RNA to the beads.
- 3.4.4. Place the tube on a magnetic rack to separate the beads from the supernatant.

- 3.4.5. After the solution is clear (about 5 minutes), carefully remove and discard the supernatant. Be careful not to disturb the beads which contain the RNA.
- 3.4.6. Add 200 μ l of freshly prepared 80% ethanol to the tube while in the magnetic rack. Incubate at room temperature for 30 seconds and then carefully remove and discard the supernatant. Be careful not to disturb the beads which contain the RNA.
- 3.4.7. Repeat Step 3.4.6. once for a total of two washes.
- 3.4.8. Completely remove residual ethanol and air dry the beads for up to 5 minutes while the tube is on the magnetic rack with the lid open.
- Caution: Do not over-dry the beads. This may result in lower recovery of RNA target. Elute the samples when the beads are still dark brown and glossy looking, but when all visible liquid has evaporated. When the beads turn lighter brown and start to crack they are too dry.**
- 3.4.9. Remove the tube from the magnetic rack. Elute the RNA from the beads by adding 7 μ l of **Nuclease-free Water**. Mix thoroughly by pipetting up and down at least 10 times and briefly spin the tube.
- 3.4.10. Incubate for 2 minutes at room temperature.
- 3.4.11. Place the tube on the magnetic rack until the solution is clear (~ 2 minutes).
- 3.4.12. Remove 5 μ l of the supernatant containing RNA and transfer to a nuclease-free tube.
- 3.4.13. Place the tube on ice and proceed to RNA Priming.



Note: If you need to stop at this point in the protocol samples can be stored at -80°C .

3.5. Priming of Highly Degraded RNA (FFPE) Which has a RIN ≤ 2 and does not Require Fragmentation

- 3.5.1. Assemble the Priming Reaction **on ice** by adding the following components:

PRIMING REACTION	VOLUME
rRNA Depleted Sample (Step 3.4.13.)	5 μ l
• (lilac) Random Primers	1 μ l
Total Volume	6 μl

- 3.5.2. Mix thoroughly by pipetting up and down ten times.
- 3.5.3. Briefly spin down the samples in a microcentrifuge.
- 3.5.4. Incubate the sample in a preheated thermal cycler as follows.
5 minutes at 65°C , with heated lid set at 105°C .
Hold at 4°C .
- 3.5.5. Transfer the tube directly to ice and proceed to First Strand cDNA Synthesis.

3.6. First Strand cDNA Synthesis

- 3.6.1. Assemble the first strand synthesis reaction **on ice** by adding the following components to the primed RNA from Step 3.5.5.:

FIRST STRAND SYNTHESIS REACTION	VOLUME
Primed RNA (Step 3.5.5.)	6 μ l
• (brown) NEBNext Strand Specificity Reagent	8 μ l
• (lilac) NEBNext First Strand Synthesis Reaction Buffer	4 μ l
• (lilac) NEBNext First Strand Synthesis Enzyme Mix	2 μ l
Total Volume	20 μl

For multiple reactions, a master mix of the reaction components can be prepared on ice before addition to the sample.

- 3.6.2. Keeping the tube on ice, mix thoroughly by pipetting up and down ten times.



- 3.6.3. Incubate the sample in a preheated thermal cycler with the heated lid set at $\geq 80^{\circ}\text{C}$ as follows:
 Step 1: 10 minutes at 25°C
 Step 2: 15 minutes at 42°C
 Step 3: 15 minutes at 70°C
 Step 4: Hold at 4°C
- 3.6.4. Proceed directly to Second Strand cDNA Synthesis Reaction.

3.7. Second Strand cDNA Synthesis

- 3.7.1 Assemble the second strand cDNA synthesis reaction **on ice** by adding the following components to the first strand reaction product from Step 3.6.3.

SECOND STRAND SYNTHESIS REACTION	VOLUME
First-Strand Synthesis Product (Step 3.6.3.)	20 μl
• (orange) NEBNext Second Strand Synthesis Reaction Buffer with dUTP Mix	8 μl
• (orange) NEBNext Second Strand Synthesis Enzyme Mix	4 μl
Nuclease-free Water	48 μl
Total Volume	80 μl

For multiple reactions, a master mix of the reaction components can be prepared on ice before addition to the sample.

- 3.7.2 Keeping the tube on ice, mix thoroughly by pipetting up and down ten times.
- 3.7.3 Incubate in a thermal cycler for **1 hour at 16°C** with the heated lid set at $\leq 40^{\circ}\text{C}$ (or off). Proceed to Purification of Double-stranded cDNA.

3.8. Purification of Double-stranded cDNA Using SPRIselect Beads or NEBNext Sample Purification Beads

- 3.8.1. Vortex SPRIselect Beads or NEBNext Sample Purification Beads to resuspend.
- 3.8.2. Add 144 μl (1.8X) of resuspended beads to the second strand synthesis reaction ($\sim 80 \mu\text{l}$). Mix well on a vortex mixer or by pipetting up and down at least 10 times.
- 3.8.3. Incubate for up to 5 minutes at room temperature.
- 3.8.4. Briefly spin the tube in a microcentrifuge to collect any sample on the sides of the tube. Place the tube on a magnet to separate beads from the supernatant. After the solution is clear (about 5 minutes), carefully remove and discard the supernatant. Be careful not to disturb the beads, which contain DNA. (**Caution: do not discard beads**).
- 3.8.5. Add 200 μl of freshly prepared 80% ethanol to the tube while in the magnetic stand. Incubate at room temperature for 30 seconds, and then carefully remove and discard the supernatant.
- 3.8.6. Repeat Step 3.8.5. once for a total of 2 washing steps.
- 3.8.7. Air dry the beads for up to 5 minutes while the tube is on the magnet with lid open.
- Caution: Do not over-dry the beads. This may result in lower recovery of DNA target. Elute the samples when the beads are still dark brown and glossy looking, but when all visible liquid has evaporated. When the beads turn lighter brown and start to crack they are too dry.**
- 3.8.8. Remove the tube from the magnet. Elute the DNA from the beads by adding 53 μl 0.1X TE Buffer (provided) to the beads. Mix well on a vortex mixer or by pipetting up and down ten times. Quickly spin the tube and incubate for 2 minutes at room temperature. Place the tube on the magnetic rack until the solution is clear (about 2 minutes),.
- 3.8.9. Remove 50 μl of the supernatant and transfer to a clean nuclease free PCR tube.



Note: If you need to stop at this point in the protocol samples can be stored at -20°C .

3.9. End Prep of cDNA Library

- 3.9.1. Assemble the end prep reaction on ice by adding the following components to the second strand synthesis product from Step 3.8.9.

END PREP REACTION	VOLUME
Second Strand Synthesis Product (Step 3.8.9.)	50 μ l
• (green) NEBNext Ultra II End Prep Reaction Buffer	7 μ l
• (green) NEBNext Ultra II End Prep Enzyme Mix	3 μ l
Total Volume	60 μl

For multiple reactions, a master mix of the reaction components can be prepared on ice before addition to the sample. If a master mix is made, add 10 μ l of master mix to 50 μ l of cDNA for the End Prep reaction.

- 3.9.2. Set a 100 μ l or 200 μ l pipette to 50 μ l and then pipette the entire volume up and down at least 10 times to mix thoroughly. Perform a quick spin to collect all liquid from the sides of the tube.

Note: It is important to mix well. The presence of a small amount of bubbles will not interfere with performance.

- 3.9.3. Incubate the sample in a thermal cycler with the heated lid set at $\geq 75^{\circ}\text{C}$ as follows.

30 minutes at 20°C

30 minutes at 65°C

Hold at 4°C .

- 3.9.4. Proceed immediately to Adaptor Ligation.

3.10. Adaptor Ligation



- 3.10.1. Dilute the • (red) NEBNext Adaptor* prior to setting up the ligation reaction in ice-cold Adaptor Dilution Buffer and keep the diluted adaptor on ice.

FFPE RNA	DILUTION REQUIRED
100–10 ng	25-fold dilution in Adaptor Dilution Buffer

* The NEBNext adaptor is provided in NEBNext oligos kit. NEB has several oligo kit options, which are supplied separately from the library prep kit.

- 3.10.2. Assemble the ligation reaction on ice by adding the following components, in the order given, to the end prep reaction product from Step 3.9.3.

LIGATION REACTION	VOLUME
End Prepped DNA (Step 3.9.3.)	60 μ l
Diluted Adaptor (Step 3.10.1.)	2.5 μ l
• (red) NEBNext Ligation Enhancer	1 μ l
• (red) NEBNext Ultra II Ligation Master Mix	30 μ l
Total Volume	93.5 μl

Note: The Ligation Master Mix and Ligation Enhancer can be mixed ahead of time and is stable for at least 8 hours at 4°C . Do not premix the Ligation Master Mix, Ligation Enhancer and adaptor prior to use in the Adaptor Ligation Step.

- 3.10.3. Set a 100 μ l or 200 μ l pipette to 80 μ l and then pipette the entire volume up and down at least 10 times to mix thoroughly. Perform a quick spin to collect all liquid from the sides of the tube.

Caution: The NEBNext Ultra II Ligation Master Mix is very viscous. Care should be taken to ensure adequate mixing of the ligation reaction, as incomplete mixing will result in reduced ligation efficiency. The presence of a small amount of bubbles will not interfere with performance.

- 3.10.4. Incubate **15 minutes at 20°C** in a thermal cycler with the heated lid off.

- 3.10.5. Add **3 μ l (blue or red) USER Enzyme** to the ligation mixture from Step 3.10.4., resulting in total volume of 96.5 μ l.

- 3.10.6. Mix well and incubate at **37°C for 15 minutes** with the heated lid set to $\geq 45^{\circ}\text{C}$, hold at 4°C . Proceed immediately to Purification of the Ligation Reaction.

3.11. Purification of the Ligation Reaction Using SPRIselect Beads or NEBNext Sample Purification Beads



- 3.11.1. Add 87 µl (0.9X) resuspended SPRIselect Beads or NEBNext Sample Purification Beads and mix well on a vortex mixer or by pipetting up and down at least 10 times.
- 3.11.2. Incubate for 10 minutes at room temperature.
- 3.11.3. Quickly spin the tube in a microcentrifuge and place the tube on an appropriate magnetic rack to separate beads from the supernatant. After the solution is clear (about 5 minutes), discard the supernatant that contains unwanted fragments. (**Caution: do not discard beads**).
- 3.11.4. Add 200 µl of freshly prepared 80% ethanol to the tube while in the magnetic rack. Incubate at room temperature for 30 seconds, and then carefully remove and discard the supernatant.
- 3.11.5. Repeat Step 3.11.4. once for a total of 2 washing steps.
- 3.11.6. Briefly spin the tube and put the tube back in the magnetic rack.
- 3.11.7. Completely remove the residual ethanol and air dry beads for up to 5 minutes while the tube is on the magnetic rack with the lid open.
Caution: Do not over-dry the beads. This may result in lower recovery of DNA target. Elute the samples when the beads are still dark brown and glossy looking, but when all visible liquid has evaporated. When the beads turn lighter brown and start to crack they are too dry.
- 3.11.8. Remove the tube from the magnetic rack. Elute DNA target from the beads by adding 17 µl 0.1X TE (provided) to the beads. Mix well on a vortex mixer or by pipetting up and down, incubate for 2 minutes at room temperature. Put the tube in the magnet until the solution is clear (about 2 minutes),
- 3.11.9. Without disturbing the bead pellet, transfer 15 µl of the supernatant to a clean PCR tube and proceed to PCR enrichment.



Note: If you need to stop at this point in the protocol samples can be stored at –20°C.

3.12. PCR Enrichment of Adaptor Ligated DNA



Use Option A for any NEBNext oligos kit where index primers are supplied in tubes. These kits have the forward and reverse primers supplied in separate tubes.

Use Option B for any NEBNext oligos kit where index primers are supplied in a 96-well plate format. These kits have the forward and reverse (i7 and i5) primers combined. Primers are supplied at 10 µM combined (5 µM each).

- 3.12.1. Set up the PCR reaction as described below based on the type of oligos (PCR primers) used.

3.12.1A. Forward and Reverse Primers Separate

COMPONENT	VOLUME PER ONE LIBRARY
Adaptor Ligated DNA (Step 3.11.9.)	15 µl
• (blue) NEBNext Ultra II Q5 Master Mix	25 µl
Index (X) Primer/i7 Primer*.**	5 µl
Universal PCR Primer/i5 Primer*.**	5 µl
Total Volume	50 µl

* NEBNext Oligos must be purchased separately from the library prep kit. Refer to the corresponding NEBNext Oligo kit manual for determining valid barcode combinations.

** Use only one i7 primer/ index primer per sample. Use only one i5 primer (or the universal primer for single index kits) per sample.

3.12.1B. Forward and Reverse Primers Combined

COMPONENT	VOLUME PER ONE LIBRARY
Adaptor Ligated DNA (Step 3.11.9.)	15 µl
• (blue) NEBNext Ultra II Q5 Master Mix	25 µl
Index Primer Mix*	10 µl
Total Volume	50 µl

* NEBNext Oligos must be purchased separately from the library prep kit. Refer to the corresponding NEBNext Oligo kit manual for determining valid barcode combinations.

- 3.12.2. Mix well by gently pipetting up and down 10 times. Quickly spin the tube in a microcentrifuge.
- 3.12.3. Place the tube on a thermal cycler with the heated lid set to 105°C and perform PCR amplification using the following PCR cycling conditions (refer to Table 3.12.3A and Table 3.12.3B):

Table 3.12.3A:

CYCLE STEP	TEMP	TIME	CYCLES
Initial Denaturation	98°C	30 seconds	1
Denaturation	98°C	10 seconds	12–16*,**
Annealing/Extension	65°C	75 seconds	
Final Extension	65°C	5 minutes	1
Hold	4°C	∞	

* The number of PCR cycles should be adjusted based on RNA input. The recommendation of PCR cycles has been optimized using fragmented UHR and FFPE RNA.

** It is important to limit the number of PCR cycles to avoid overamplification. If overamplification occurs, a second peak ~ 1,000 bp will appear on the Bioanalyzer trace (See Figure 7.2 in the Troubleshooting Guide, Section 7).

Table 3.12.3B: Recommended PCR cycles based on input amount:

FFPE RNA INPUT	RECOMMENDED PCR CYCLES
100 ng	12–13
10 ng	15–16

3.13. Purification of the PCR Reaction using SPRIselect Beads or NEBNext Sample Purification Beads

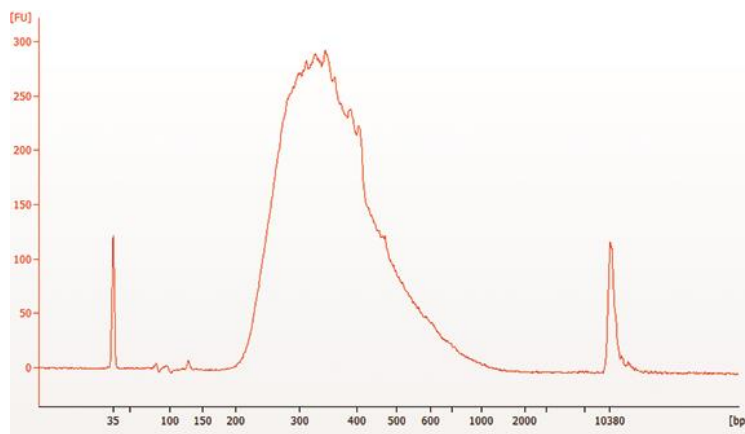
- 3.13.1. Vortex SPRIselect Beads or NEBNext Sample Purification Beads to resuspend.
- 3.13.2. Add 45 µl (0.9X) of resuspended beads to the PCR reaction (~ 50 µl). Mix well on a vortex mixer or by pipetting up and down at least 10 times.
- 3.13.3. Incubate for up to 5 minutes at room temperature.
- 3.13.4. Quickly spin the tube in a microcentrifuge and place the tube on an appropriate magnetic rack to separate beads from the supernatant. After the solution is clear (about 5 minutes), carefully remove and discard the supernatant. Be careful not to disturb the beads that contain DNA targets. (**Caution: do not discard beads**).
- 3.13.5. Add 200 µl of freshly prepared 80% ethanol to the tube while in the magnetic rack. Incubate at room temperature for 30 seconds, and then carefully remove and discard the supernatant.
- 3.13.6. Repeat Step 3.13.5. once for a total of 2 washing steps.
- 3.13.7. Air dry the beads for up to 5 minutes while the tube is on the magnetic rack with the lid open.
- Caution: Do not over-dry the beads. This may result in lower recovery of DNA target. Elute the samples when the beads are still dark brown and glossy looking, but when all visible liquid has evaporated. When the beads turn lighter brown and start to crack they are too dry.**
- 3.13.8. Remove the tube from the magnetic rack. Elute the DNA target from the beads by adding 23 µl 0.1X TE (provided) to the beads. Mix well on a vortex mixer or by pipetting up and down ten times, quickly spin the tube in a microcentrifuge and incubate for 2 minutes at room temperature. Place the tube in the magnetic rack until the solution is clear (about 2 minutes).
- 3.13.9. Transfer 20 µl of the supernatant to a clean PCR tube, and store at –20°C.

3.14. Assess Library Quality on an Agilent Bioanalyzer DNA Chip

- 3.14.1. Run 1 μ l library on a DNA High Sensitivity Chip. A dilution may be necessary for running on a Bioanalyzer High Sensitivity DNA Chip.
- 3.14.2. Check that the electropherogram shows a narrow distribution with a peak size approximately 300 bp.

Note: If a peak at ~ 80 bp (primers) or 128 bp (adaptor-dimer) is visible in the Bioanalyzer traces, bring up the sample volume (from Step 3.13.9) to 50 μ l with 1X TE Buffer and repeat the SPRIselect Bead or NEBNext Sample Purification Bead Cleanup Step (Section 3.13). Adaptor dimer peak range is derived from values observed on BioAnalyzer. Peaks may appear shifted on other library analysis instruments such as TapeStation or Fragment Analyzer.

Figure 3.14.1 Example of FFPE RNA library size distribution on a Bioanalyzer.



Section 4

Protocols for use with Purified mRNA or rRNA Depleted RNA, Non-Indexed Adaptor and NEBNext Ultra II Directional RNA Library Prep Kit for Illumina (NEB #E7760, E7765)

Symbols



This caution sign signifies a step in the protocol that has two paths leading to the same end point but is dependent on a user variable, like the type of RNA input.



This is a point where you can safely stop the protocol and store the samples prior to proceeding to the next step in the protocol.

•
Colored bullets indicate the cap color of the reagent to be added.

RNA Sample Requirements

This Section can be used for libraries without any enrichment or depletion of total RNA with RIN scores > 7.

RNA Integrity:

RNA Integrity Number (RIN) is computed using ribosomal RNA (rRNA) amount in the sample. If rRNA is removed by any method, the RIN value should not be used to evaluate the integrity of the RNA sample. In this case, NEB recommends that the fragmentation time is empirically determined if the RNA sample is suspected to be low quality. **The following recommendation apply to the total RNA samples only.**

Assess the quality of the input RNA by running the RNA sample on an Agilent Bioanalyzer RNA 6000 Nano/Pico Chip to determine the RNA Integrity Number (RIN). RNA with different RIN values require different fragmentation times or no fragmentation at all.

For intact (RIN > 7) or partially degraded RNA samples (RIN = 2 to 7) follow the library preparation protocol in Section 4 (current Section). See Table 4.1.1 for the recommended the fragmentation times.

For highly degraded samples (RIN = 1 to 2) (e.g., FFPE), which do not require fragmentation, follow the library preparation protocol in Section 5.

RNA Sample Requirements:

The RNA sample should be free of salts (e.g., Mg²⁺, or guanidinium salts, divalent cation chelating agents (e.g., EDTA or EGTA) or organics (e.g., phenol or ethanol). RNA must be free of DNA. gDNA is a common contaminant from RNA preps. It may be carried over from the interphase of organic extractions or when the silica matrix of solid phase RNA purification methods is overloaded. If the total RNA sample may contain gDNA contamination, treat the sample with DNase I to remove all traces of DNA (DNase is not provided in this kit). After treatment with DNase I the enzyme should be removed from the sample. DNase I can be removed from the extraction using phenol/chloroform extraction and ethanol precipitation.

Input Amount Requirements

1–100 ng purified mRNA or rRNA depleted RNA* that is **quantified after the purification**. RNA should be DNA free in up to 5 µl of Nuclease-free Water, quantified by Qubit Fluorometer and quality checked by Bioanalyzer.

The protocol is optimized for approximately 200 nt RNA inserts. To generate libraries with longer RNA insert sizes, refer to Appendix A (Section 6) for recommended fragmentation times and size selection conditions.

This protocol has been optimized using Universal Human Reference Total RNA.

* or Total RNA samples, if mRNA enrichment or depletion is not desired

4.1. RNA Fragmentation and Priming



RNA fragmentation is only required for intact or partially degraded RNA. Recommended fragmentation times can be found in Tables 1 and 2.

4.1.1. Assemble the fragmentation and priming reaction **on ice** in a nuclease-free tube by adding the following components:

FRAGMENTATION AND PRIMING MIX	VOLUME
Purified mRNA or rRNA Depleted RNA	5 μ l
• (lilac) NEBNext First Strand Synthesis Reaction Buffer	4 μ l
• (lilac) Random Primers	1 μ l
Total Volume	10 μl

For multiple reactions, a master mix of the reaction components can be prepared on ice before addition to the sample.

4.1.2. Mix thoroughly by pipetting up and down ten times.

4.1.3. Place the tube in a thermal cycler and incubate as follows:

Incubate at 94°C with the heated lid set to 105°C

Hold at 4°C

Follow the recommendations in Tables 1 and 2 for libraries with inserts ~200 nt. If ribosomal RNA peaks are present, suggesting higher quality, follow recommendations in Table 1. If ribosomal peaks are not present, then follow the DV200 recommendations in Table 2.

Table 1. Suggested fragmentation times based on RIN value of RNA input.

RNA TYPE	RIN	FRAG. TIME
Intact RNA	≥ 7	8–15 mins
Partially Degraded RNA	2–6	8 mins

Table 2. Suggested fragmentation times based on DV200 of RNA input.

RNA TYPE	DV200	FRAG. TIME
Partially Degraded RNA	DV200 between 30 and 70	5 mins
Highly Degraded RNA	DV200 ≤ 30	5 mins*

* Results may vary due to the high degradation level of these samples.

Note: Refer to Appendix A (Section 6) for fragmentation conditions if you are preparing libraries with large inserts (> 200 bp). Conditions in Appendix A (Section 6) only apply for intact RNA.

4.1.4. Immediately transfer the tube to ice and proceed to First Strand cDNA Synthesis.

4.2. First Strand cDNA Synthesis Reaction

4.2.1. Assemble the first strand synthesis reaction **on ice** by adding the following components to the fragmented and primed RNA from Step 4.1.4.:

FIRST STRAND SYNTHESIS REACTION	VOLUME
Fragmented and Primed RNA (Step 4.1.4.)	10 μ l
• (brown) NEBNext Strand Specificity Reagent	8 μ l
• (lilac) NEBNext First Strand Synthesis Enzyme Mix	2 μ l
Total Volume	20 μl

For multiple reactions, a master mix of the reaction components can be prepared on ice before addition to the sample.

4.2.2. Mix thoroughly by pipetting up and down ten times.



4.2.3. Incubate the sample in a preheated thermal cycler with the heated lid set at $\geq 80^{\circ}\text{C}$ as follows:

Note: If you are following recommendations in Appendix A, (Section 6), for longer RNA fragments (creating inserts > 200 bases), increase the incubation at 42°C from 15 minutes to 50 minutes at Step 2 below.

Step 1: 10 minutes at 25°C

Step 2: 15 minutes at 42°C

Step 3: 15 minutes at 70°C

Step 4: Hold at 4°C

4.2.4. Proceed directly to Second Strand cDNA Synthesis.

4.3. Second Strand cDNA Synthesis

4.3.1. Assemble the second strand cDNA synthesis reaction **on ice** by adding the following components to the first strand reaction product from Step 4.2.3.

SECOND STRAND SYNTHESIS REACTION	VOLUME
First-Strand Synthesis Product (Step 4.2.3.)	20 μl
• (orange) NEBNext Second Strand Synthesis Reaction Buffer with dUTP Mix	8 μl
• (orange) NEBNext Second Strand Synthesis Enzyme Mix	4 μl
Nuclease-free Water	48 μl
Total Volume	80 μl

For multiple reactions, a master mix of the reaction components can be prepared on ice before addition to the sample.

4.3.2. Keeping the tube on ice, mix thoroughly by pipetting the reaction up and down ten times.

4.3.3. Incubate in a thermal cycler for **1 hour at 16°C** with the heated lid set at $\leq 40^{\circ}\text{C}$ (or off). Proceed to Purification of Double-stranded cDNA.

4.4. Purification of Double-stranded cDNA Using SPRIselect Beads or NEBNext Sample Purification Beads

4.4.1. Vortex SPRIselect Beads or NEBNext Sample Purification Beads to resuspend.

4.4.2. Add 144 μl (1.8X) of resuspended beads to the second strand synthesis reaction ($\sim 80 \mu\text{l}$). Mix well on a vortex mixer or by pipetting up and down at least 10 times.

4.4.3. Incubate for 5 minutes at room temperature.

4.4.4. Briefly spin the tube in a microcentrifuge to collect any sample on the sides of the tube. Place the tube on a magnetic rack to separate beads from the supernatant. After the solution is clear (about 5 minutes), carefully remove and discard the supernatant. Be careful not to disturb the beads, which contain DNA. **(Caution: do not discard beads).**

4.4.5. Add 200 μl of freshly prepared 80% ethanol to the tube while in the magnetic rack. Incubate at room temperature for 30 seconds, and then carefully remove and discard the supernatant.

4.4.6. Repeat Step 4.4.5. once for a total of 2 washing steps.

4.4.7. Air dry the beads for up to 5 minutes while the tube is on the magnetic rack with lid open.

Caution: Do not over-dry the beads. This may result in lower recovery of DNA target. Elute the samples when the beads are still dark brown and glossy looking, but when all visible liquid has evaporated. When the beads turn lighter brown and start to crack they are too dry.

4.4.8. Remove the tube from the magnetic rack. Elute the DNA from the beads by adding 53 μl 0.1X TE Buffer (provided) to the beads. Mix well on a vortex mixer or by pipetting up and down several times. Quickly spin the tube and incubate for 2 minutes at room temperature. Place the tube on the magnetic rack until the solution is clear (about 2 minutes).

4.4.9. Remove 50 μl of the supernatant and transfer to a clean nuclease free PCR tube.



Note: If you need to stop at this point in the protocol samples can be stored at -20°C .

4.5. End Prep of cDNA Library

4.5.1. Assemble the end prep reaction **on ice** by adding the following components to the second strand synthesis product from Step 4.4.9.

END PREP REACTION	VOLUME
Second Strand Synthesis Product (Step 4.4.9.)	50 μ l
• (green) NEBNext Ultra II End Prep Reaction Buffer	7 μ l
• (green) NEBNext Ultra II End Prep Enzyme Mix	3 μ l
Total Volume	60 μl

For multiple reactions, a master mix of the reaction components can be prepared on ice before addition to the sample. If a master mix is made, add 10 μ l of master mix to 50 μ l of cDNA for the End Prep reaction.

4.5.2. Set a 100 μ l or 200 μ l pipette to 50 μ l and then pipette the entire volume up and down at least 10 times to mix thoroughly. Perform a quick spin to collect all liquid from the sides of the tube.

Note: It is important to mix well. The presence of a small amount of bubbles will not interfere with performance.

4.5.3. Incubate the sample in a thermal cycler with the heated lid set at $\geq 75^{\circ}\text{C}$ as follows:

30 minutes at 20°C

30 minutes at 65°C

Hold at 4°C

4.5.4. Proceed immediately to Adaptor Ligation.

4.6. Adaptor Ligation



4.6.1. Dilute the • (red) NEBNext Adaptor* prior to setting up the ligation reaction in ice-cold Adaptor Dilution Buffer and keep the diluted adaptors on ice.

PURIFIED RNA	DILUTION REQUIRED
100–11 ng	5-fold dilution in Adaptor Dilution Buffer
10–1 ng	25-fold dilution in Adaptor Dilution Buffer

* The NEBNext adaptor is provided in NEBNext oligos kit. NEB has several oligo kit options, which are supplied separately from the library prep kit.

4.6.2. Assemble the ligation reaction **on ice** by adding the following components, in the order given, to the end prep reaction product from Step 4.5.3:

LIGATION REACTION	VOLUME
End Prepped DNA (Step 4.5.3.)	60 μ l
Diluted Adaptor (Step 4.6.1.)	2.5 μ l
• (red) NEBNext Ligation Enhancer	1 μ l
• (red) NEBNext Ultra II Ligation Master Mix	30 μ l
Total Volume	93.5 μl

The Ligation Master Mix and Ligation Enhancer can be mixed ahead of time and is stable for at least 8 hours at 4°C . Do not pre-mix the Ligation Master Mix, Ligation Enhancer and adaptor prior to use in the Adaptor Ligation Step.

4.6.3. Set a 100 μ l or 200 μ l pipette to 80 μ l and then pipette the entire volume up and down at least 10 times to mix thoroughly. Perform a quick spin to collect all liquid from the sides of the tube.



Caution: The NEBNext Ultra II Ligation Master Mix is very viscous. Care should be taken to ensure adequate mixing of the ligation reaction, as incomplete mixing will result in reduced ligation efficiency. The presence of a small amount of bubbles will not interfere with performance.

4.6.4. Incubate **15 minutes at 20°C** in a thermal cycler with the heated lid off.

- 4.6.5. Add 3 µl (blue or red) USER Enzyme to the ligation mixture from Step 4.6.4., resulting in total volume of 96.5 µl.
- 4.6.6. Mix well and incubate at **37°C for 15 minutes** with the heated lid set to $\geq 45^{\circ}\text{C}$, hold at 4°C . Proceed immediately to Purification of the Ligation Reaction.

4.7. Purification of the Ligation Reaction Using SPRIselect Beads or NEBNext Sample Purification Beads



Note: If you are selecting for larger size fragments (> 200 nt) follow the size selection recommendations in Appendix A, Section 6.

- 4.7.1. Add 87 µl (0.9X) resuspended SPRIselect Beads or NEBNext Sample Purification Beads and mix well on a vortex mixer or by pipetting up and down at least 10 times.
- 4.7.2. Incubate for 10 minutes at room temperature.
- 4.7.3. Quickly spin the tube in a microcentrifuge and place the tube on an appropriate magnetic rack to separate beads from the supernatant. After the solution is clear (about 5 minutes), discard the supernatant that contain unwanted fragments (**Caution: do not discard beads**).
- 4.7.4. Add 200 µl of freshly prepared 80% ethanol to the tube while in the magnetic rack. Incubate at room temperature for 30 seconds, and then carefully remove and discard the supernatant.
- 4.7.5. Repeat Step 4.7.4. once for a total of 2 washing steps.
- 4.7.6. Briefly spin the tube and put the tube back in the magnetic rack.
- 4.7.7. Completely remove the residual ethanol and air dry beads for up to 5 minutes while the tube is on the magnetic rack with the lid open.

Caution: Do not over-dry the beads. This may result in lower recovery of DNA target. Elute the samples when the beads are still dark brown and glossy looking, but when all visible liquid has evaporated. When the beads turn lighter brown and start to crack they are too dry.

- 4.7.8. Remove the tube from the magnet. Elute DNA target from the beads by adding 17 µl 0.1X TE (provided) to the beads. Mix well on a vortex mixer or by pipetting up and down several times, and incubate for 2 minutes at room temperature. Put the tube in the magnetic rack until the solution is clear (about 2 minutes),.
- 4.7.9. Without disturbing the bead pellet, transfer 15 µl of the supernatant to a clean PCR tube and proceed to PCR enrichment.



Note: If you need to stop at this point in the protocol samples can be stored at -20°C .

4.8. PCR Enrichment of Adaptor Ligated DNA



Use Option A for any NEBNext oligos kit where index primers are supplied in tubes. These kits have the forward and reverse primers supplied in separate tubes.

Use Option B for any NEBNext oligos kit where index primers are supplied in a 96-well plate format. These kits have the forward and reverse (i7 and i5) primers combined. Primers are supplied at 10 µM combined (5 µM each).

- 4.8.1. Set up the PCR reaction as described below based on the type of oligos (PCR primers) used.

4.8.1A. Forward and Reverse Primers Separate

COMPONENT	VOLUME PER ONE LIBRARY
Adaptor Ligated DNA (Step 4.7.9.)	15 µl
• (blue) NEBNext Ultra II Q5 Master Mix	25 µl
Index (X) Primer/i7 Primer ^{*,**}	5 µl
Universal PCR Primer/i5 Primer ^{*,**}	5 µl
Total Volume	50 µl

* NEBNext Oligos must be purchased separately from the library prep kit. Refer to the corresponding NEBNext Oligo kit manual for determining valid barcode combinations.

** Use only one i7 primer/ index primer per sample. Use only one i5 primer (or the universal primer for single index kits) per sample

4.8.1B. Forward and Reverse Primers Combined

COMPONENT	VOLUME PER ONE LIBRARY
Adaptor Ligated DNA (Step 4.7.9)	15 µl
• (blue) NEBNext Ultra II Q5 Master Mix	25 µl
Index Primer Mix*	10 µl
Total Volume	50 µl

* NEBNext Oligos must be purchased separately from the library prep kit. Refer to the corresponding NEBNext Oligo kit manual for determining valid barcode combinations.

4.8.2. Mix well by gently pipetting up and down 10 times. Quickly spin the tube in a microcentrifuge.

4.8.3. Place the tube on a thermal cycler with the heated lid set to 105°C and perform PCR amplification using the following PCR cycling conditions (refer to Table 4.8.3A and Table 4.8.3B):

Table 4.8.3A:

CYCLE STEP	TEMP	TIME	CYCLES
Initial Denaturation	98°C	30 seconds	1
Denaturation	98°C	10 seconds	6–13*,**
Annealing/Extension	65°C	75 seconds	
Final Extension	65°C	5 minutes	1
Hold	4°C	∞	

* The number of PCR cycles should be adjusted based on RNA input.

** It is important to limit the number of PCR cycles to avoid overamplification. If overamplification occurs, a second peak ~ 1,000 bp will appear on the Bioanalyzer trace (See Figure 7.2 in the Troubleshooting Guide, Section 7).

Table 4.8.3B: Recommended PCR cycles based on input amount:

PURIFIED mRNA or rRNA DEPLETED RNA (QUANTIFIED AFTER PURIFICATION)	RECOMMENDED PCR CYCLES
100 ng	6–7
50 ng	7–8
10 ng	9–10
1 ng	12–13

Note: PCR cycles are recommended based on high quality Universal Human Reference Total RNA. It may require optimization based on the sample quality to prevent PCR over-amplification.

4.9. Purification of the PCR Reaction using SPRIselect Beads or NEBNext Sample Purification Beads

4.9.1. Vortex SPRIselect Beads or NEBNext Sample Purification Beads to resuspend.

4.9.2. Add 45 µl (0.9X) of resuspended beads to the PCR reaction (~ 50 µl). Mix well on a vortex mixer or by pipetting up and down at least 10 times.

4.9.3. Incubate for 5 minutes at room temperature.

4.9.4. Quickly spin the tube in a microcentrifuge and place the tube on an appropriate magnetic rack to separate beads from the supernatant. After the solution is clear (about 5 minutes), carefully remove and discard the supernatant. Be careful not to disturb the beads that contain DNA targets. (**Caution: do not discard beads**).

4.9.5. Add 200 µl of freshly prepared 80% ethanol to the tube while in the magnetic rack. Incubate at room temperature for 30 seconds, and then carefully remove and discard the supernatant.

4.9.6. Repeat Step 4.9.5. once for a total of 2 washing steps.

4.9.7. Air dry the beads for up to 5 minutes while the tube is on the magnetic rack with the lid open.

Caution: Do not over-dry the beads. This may result in lower recovery of DNA target. Elute the samples when the beads are still dark brown and glossy looking, but when all visible liquid has evaporated. When the beads turn lighter brown and start to crack they are too dry.

4.9.8. Remove the tube from the magnetic rack. Elute the DNA target from the beads by adding 23 μ l 0.1X TE (provided) to the beads. Mix well on a vortex mixer or by pipetting up and down several times. Quickly spin the tube in a microcentrifuge and incubate for 2 minutes at room temperature. Place the tube in the magnetic rack until the solution is clear (about 2 minutes).

4.9.9. Transfer 20 μ l of the supernatant to a clean PCR tube, and store at -20°C .

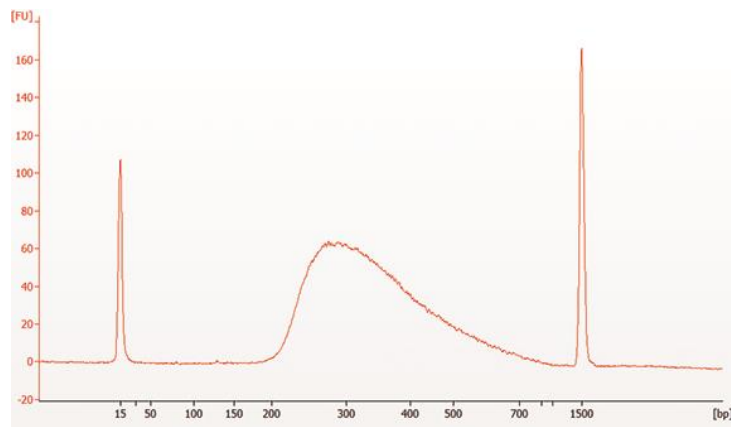
4.10. Assess Library Quality on an Agilent Bioanalyzer DNA Chip

4.10.1. Run 1 μ l library on a DNA 1000 chip. If the library yield is too low to quantify on this chip, please run the samples on a DNA High Sensitivity chip. A dilution may be necessary for running on a Bioanalyzer High Sensitivity DNA Chip.

4.10.2. Check that the electropherogram shows a narrow distribution with a peak size approximately 300 bp.

Note: If a peak at ~ 80 bp (primers) or 128 bp (adaptor-dimer) is visible in the Bioanalyzer traces; Bring up the sample volume (from Step 4.9.9) to 50 μ l with 0.1X TE buffer and repeat the SPRIselect Bead or NEBNext Sample Purification Bead Cleanup Step (Section 4.9). Adaptor dimer peak range is derived from values observed on Bioanalyzer. Peaks may appear shifted on other library analysis instruments such as TapeStation or Fragment Analyzer

Figure 4.10.1 Example of RNA library size distribution on a Bioanalyzer.



Section 5

Protocol for use with rRNA Depleted FFPE RNA, Non -Indexed Adaptor and NEBNext Ultra II Directional RNA Library Prep Kit for Illumina (NEB #E7760, E7765)

Symbols



This caution sign signifies a step in the protocol that has two paths leading to the same end point but is dependent on a user variable, like the type of RNA input.



This is a point where you can safely stop the protocol and store the samples prior to proceeding to the next step in the protocol.

Colored bullets indicate the cap color of the reagent to be added.

The protocol has been optimized using fragmented high quality Universal Human Reference Total RNA and FFPE RNA.

RNA Sample Requirements

This Section can be used for libraries without any enrichment or depletion of total RNA with RIN scores 1–2.

RNA Integrity:

RNA Integrity Number (RIN) is computed using ribosomal RNA (rRNA) amount in the sample. If rRNA is removed by any method, the RIN value should not be used to evaluate the integrity of the RNA sample. The following recommendation apply to the total RNA samples only.

Assess the quality of the input RNA by running the RNA sample on an Agilent Bioanalyzer RNA 6000 Nano/Pico Chip to determine the RNA Integrity Number (RIN). RNA with different RIN values require different fragmentation times or no fragmentation at all.

For intact (RIN > 7) or partially degraded RNA samples (RIN = 2 to 7) follow the library preparation protocol in Section 4.

For highly degraded samples (RIN = 1 to 2) (e.g. FFPE), which does not require fragmentation, follow the library preparation protocol in Section 5 (current Section).

RNA Sample Requirements:

The RNA sample should be free of salts (e.g., Mg²⁺, or guanidinium salts, divalent cation chelating agents (e.g., EDTA or EGTA) or organics (e.g., phenol or ethanol). RNA must be free of DNA. gDNA is a common contaminant from RNA preps. It may be carried over from the interphase of organic extractions or when the silica matrix of solid phase RNA purification methods is overloaded. If the total RNA sample may contain gDNA contamination, treat the sample with DNase I to remove all traces of DNA (DNase is not provided in this kit). After treatment with DNase I the enzyme should be removed from the sample. DNase I can be removed from the extraction using phenol/chloroform extraction and ethanol precipitation.

Starting Material

1–100 ng alternative rRNA depleted FFPE RNA that is quantified after rRNA depletion. RNA should be DNA free in up to 5 µl of Nuclease-free Water, quantified by Qubit Fluorometer and quality checked by Bioanalyzer.

5.1. Priming of Highly Degraded RNA (FFPE) Which has a RIN ≤ 2 and does not Require Fragmentation

5.1.1. Assemble the Priming Reaction on ice by adding the following components:

PRIMING REACTION	VOLUME
rRNA Depleted FFPE RNA (1–100 ng)	5 µl
• (lilac) Random Primers	1 µl
Total Volume	6 µl

5.1.2. Mix thoroughly by pipetting up and down several times.

5.1.3. Briefly spin down the samples in a microcentrifuge.

5.1.4. Incubate the sample in a preheated thermal cycler as follows.

5 minutes at 65°C, with heated lid set at 105°C

Hold at 4°C

5.1.5. Transfer the tube directly to ice and proceed to First Strand cDNA Synthesis.

5.2. First Strand cDNA Synthesis

5.2.1. Assemble the first strand synthesis reaction **on ice** by adding the following components:

FIRST STRAND SYNTHESIS REACTION	VOLUME
Primed RNA (Step 5.1.5.)	6 μ l
• (lilac) NEBNext First Strand Synthesis Reaction Buffer	4 μ l
• (brown) NEBNext Strand Specificity Reagent	8 μ l
• (lilac) NEBNext First Strand Synthesis Enzyme Mix	2 μ l
Total Volume	20 μl

For multiple reactions, a master mix of the reaction components can be prepared on ice before addition to the sample.

5.2.2. Keeping the tube on ice, mix thoroughly by pipetting up and down several times.



5.2.3. Incubate the sample in a preheated thermal cycler with the heated lid set at $\geq 80^\circ\text{C}$ as follows:

Step 1: 10 minutes at 25°C

Step 2: 15 minutes at 42°C

Step 3: 15 minutes at 70°C

Step 4: Hold at 4°C

5.2.4. Proceed directly to Second Strand cDNA Synthesis.

5.3. Second Strand cDNA Synthesis

5.3.1. Assemble the second strand cDNA synthesis reaction **on ice** by adding the following components to the first strand reaction product from Step 5.2.3:

SECOND STRAND SYNTHESIS REACTION	VOLUME
First-Strand Synthesis Product (Step 5.2.3.)	20 μ l
• (orange) NEBNext Second Strand Synthesis Reaction Buffer with dUTP Mix	8 μ l
• (orange) NEBNext Second Strand Synthesis Enzyme Mix	4 μ l
Nuclease-free Water	48 μ l
Total Volume	80 μl

For multiple reactions, a master mix of the reaction components can be prepared on ice before addition to the sample.

5.3.2. Keeping the tube on ice, mix thoroughly by pipetting up and down several times.

5.3.3. Incubate in a thermal cycler for **1 hour at 16°C** with the heated lid set at $\leq 40^\circ\text{C}$ (or off). Proceed to Purification of Double-stranded cDNA.

5.4. Purification of Double-stranded cDNA Using SPRIselect Beads or NEBNext Sample Purification Beads

5.4.1. Vortex SPRIselect Beads or NEBNext Sample Purification Beads to resuspend.

5.4.2. Add 144 μ l (1.8X) of resuspended beads to the second strand synthesis reaction (~80 μ l). Mix well on a vortex mixer or by pipetting up and down at least 10 times.

5.4.3. Incubate for **5 minutes** at room temperature.

5.4.4. Briefly spin the tube in a microcentrifuge to collect any sample on the sides of the tube. Place the tube on a magnetic rack to separate beads from the supernatant. After the solution is clear (about 5 minutes), carefully remove and discard the supernatant. Be careful not to disturb the beads, which contain DNA. (**Caution: do not discard beads**).

5.4.5. Add **200 μ l** of freshly prepared 80% ethanol to the tube while in the magnetic rack. Incubate at room temperature for 30 seconds, and then carefully remove and discard the supernatant.

5.4.6. Repeat Step 5.4.5. once for a total of 2 washing steps.

5.4.7. Air dry the beads for up to 5 minutes while the tube is on the magnet with lid open.

Caution: Do not over-dry the beads. This may result in lower recovery of DNA target. Elute the samples when the beads are still dark brown and glossy looking, but when all visible liquid has evaporated. When the beads turn lighter brown and start to crack they are too dry.

5.4.8. Remove the tube from the magnet. Elute the DNA from the beads by adding 53 µl 0.1X TE Buffer (provided) to the beads. Mix well on a vortex mixer or by pipetting up and down ten times. Quickly spin the tube and incubate for 2 minutes at room temperature. Place the tube on the magnetic rack until the solution is clear (about 2 minutes).

5.4.9. Remove 50 µl of the supernatant and transfer to a clean nuclease free PCR tube.



Note: If you need to stop at this point in the protocol samples can be stored at -20°C.

5.5. End Prep of cDNA Library

5.5.1. Assemble the end prep reaction **on ice** by adding the following components to the second strand synthesis product from Step 5.4.9.

END PREP REACTION	VOLUME
Second Strand Synthesis Product (Step 5.4.9.)	50 µl
• (green) NEBNext Ultra II End Prep Reaction Buffer	7 µl
• (green) NEBNext Ultra II End Prep Enzyme Mix	3 µl
Total Volume	60 µl

For multiple reactions, a master mix of the reaction components can be prepared on ice before addition to the sample.

If a master mix is made, add 10 µl of master mix to 50 µl of cDNA for the End Prep reaction.

5.5.2. Set a 100 µl or 200 µl pipette to 50 µl and then pipette the entire volume up and down at least 10 times to mix thoroughly. Perform a quick spin to collect all liquid from the sides of the tube.

Note: It is important to mix well. The presence of a small amount of bubbles will not interfere with performance.

5.5.3. Incubate the sample in a thermal cycler with the heated lid set at $\geq 75^{\circ}\text{C}$ as follows.

30 minutes at 20°C

30 minutes at 65°C

Hold at 4°C.

5.5.4. Proceed immediately to Adaptor Ligation.

5.6. Adaptor Ligation



5.6.1. Dilute the • (red) NEBNext Adaptor* prior to setting up the ligation reaction in ice-cold Adaptor Dilution Buffer and keep the diluted adaptor on ice.

PURIFIED RNA	DILUTION REQUIRED
100–11 ng	5-fold dilution in Adaptor Dilution Buffer
10–1 ng	25-fold dilution in Adaptor Dilution Buffer

* The NEBNext adaptor is provided in NEBNext oligos kit. NEB has several oligo kit options, which are supplied separately from the library prep kit.

- 5.6.2. Assemble the ligation reaction **on ice** by adding the following components, in the order given, to the end prep reaction product from Step 5.5.4.

LIGATION REACTION	VOLUME
End Prepped DNA (Step 5.5.4.)	60 μ l
Diluted Adaptor (Step 5.6.1.)	2.5 μ l
• (red) NEBNext Ligation Enhancer	1 μ l
• (red) NEBNext Ultra II Ligation Master Mix	30 μ l
Total Volume	93.5 μl

Note: The Ligation Master Mix and Ligation Enhancer can be mixed ahead of time and is stable for at least 8 hours at 4°C. Do not pre-mix the Ligation Master Mix, Ligation Enhancer and adaptor prior to use in the Adaptor Ligation Step.

- 5.6.3. Set a 100 μ l or 200 μ l pipette to 80 μ l and then pipette the entire volume up and down at least 10 times to mix thoroughly. Perform a quick spin to collect all liquid from the sides of the tube.

Caution: The NEBNext Ultra II Ligation Master Mix is very viscous. Care should be taken to ensure adequate mixing of the ligation reaction, as incomplete mixing will result in reduced ligation efficiency. The presence of a small amount of bubbles will not interfere with performance.

- 5.6.4. Incubate **15 minutes at 20°C** in a thermal cycler with the heated lid off.
- 5.6.5. Add 3 μ l (blue or red) USER Enzyme to the ligation mixture from Step 5.6.4., resulting in total volume of 96.5 μ l.
- 5.6.6. Mix well and incubate at **37°C for 15 minutes** with the heated lid set to $\geq 45^\circ\text{C}$, hold at 4°C. Proceed immediately to Purification of Ligation Reaction.

5.7. Purification of Ligation Reaction Using SPRIselect Beads or NEBNext Sample Purification Beads

- 5.7.1. Add 87 μ l (0.9X) resuspended SPRIselect Beads or NEBNext Sample Purification Beads and mix well on a vortex mixer or by pipetting up and down at least 10 times.
- 5.7.2. Incubate for 10 minutes at room temperature.
- 5.7.3. Quickly spin the tube in a microcentrifuge and place the tube on an appropriate magnetic rack to separate beads from the supernatant. After the solution is clear (about 5 minutes), discard the supernatant that contains unwanted fragments. (**Caution: do not discard beads**).
- 5.7.4. Add 200 μ l of freshly prepared 80% ethanol to the tube while in the magnetic rack. Incubate at room temperature for 30 seconds, and then carefully remove and discard the supernatant.
- 5.7.5. Repeat Step 5.7.4. once for a total of 2 washing steps.
- 5.7.6. Briefly spin the tube and put the tube back in the magnetic rack.
- 5.7.7. Completely remove the residual ethanol and air dry beads for up to 5 minutes while the tube is on the magnetic rack with the lid open.
- Caution: Do not over-dry the beads. This may result in lower recovery of DNA target. Elute the samples when the beads are still dark brown and glossy looking, but when all visible liquid has evaporated. When the beads turn lighter brown and start to crack they are too dry.**
- 5.7.8. Remove the tube from the magnetic rack. Elute DNA target from the beads by adding 17 μ l 0.1X TE (provided) to the beads. Mix well on a vortex mixer or by pipetting up and down ten times. Quickly spin the tube and incubate for 2 minutes at room temperature. Put the tube on the magnet until the solution is clear (about 2 minutes).
- 5.7.9. Without disturbing the bead pellet, transfer 15 μ l of the supernatant to a clean PCR tube and proceed to PCR enrichment.



Note: If you need to stop at this point in the protocol samples can be stored at -20°C .

5.8. PCR Enrichment of Adaptor Ligated DNA



Use Option A for any NEBNext oligos kit where index primers are supplied in tubes. These kits have the forward and reverse primers supplied in separate tubes.

Use Option B for any NEBNext oligos kit where index primers are supplied in a 96-well plate format. These kits have the forward and reverse (i7 and i5) primers combined. Primers are supplied at 10 μ M combined (5 μ M each).

5.8.1. Set up the PCR reaction as described below based on the type of oligos (PCR primers) used.

5.8.1A. Forward and Reverse Primers Separate

COMPONENT	VOLUME PER ONE LIBRARY
Adaptor Ligated DNA (Step 5.7.9.)	15 μ l
• (blue) NEBNext Ultra II Q5 Master Mix	25 μ l
Index (X) Primer/i7 Primer ^{*,**}	5 μ l
Universal PCR Primer/i5 Primer ^{*,**}	5 μ l
Total Volume	50 μl

* NEBNext Oligos must be purchased separately from the library prep kit. Refer to the corresponding NEBNext Oligo kit manual for determining valid barcode combinations.

** Use only one i7 primer/ index primer per sample. Use only one i5 primer (or the universal primer for single index kits) per sample

5.8.1B. Forward and Reverse Primers Combined

COMPONENT	VOLUME PER ONE LIBRARY
Adaptor Ligated DNA (Step 5.7.9.)	15 μ l
• (blue) NEBNext Ultra II Q5 Master Mix	25 μ l
Index Primer Mix [*]	10 μ l
Total Volume	50 μl

* NEBNext Oligos must be purchased separately from the library prep kit. Refer to the corresponding NEBNext Oligo kit manual for determining valid barcode combinations.

5.8.2. Mix well by gently pipetting up and down 10 times. Quickly spin the tube in a microcentrifuge.

5.8.3. Place the tube on a thermal cycler with the heated lid set to 105°C and perform PCR amplification using the following PCR cycling conditions (refer to Table 5.8.3A and Table 5.8.3B):

Table 5.8.3A:

CYCLE STEP	TEMP	TIME	CYCLES
Initial Denaturation	98°C	30 seconds	1
Denaturation	98°C	10 seconds	7–13 ^{*,**}
Annealing/Extension	65°C	75 seconds	
Final Extension	65°C	5 minutes	1
Hold	4°C	∞	

* The number of PCR cycles should be adjusted based on RNA input. The recommendation of PCR cycles has been optimized using fragmented UHR and FFPE RNA.

** It is important to limit the number of PCR cycles to avoid overamplification. If overamplification occurs, a second peak ~ 1,000 bp will appear on the Bioanalyzer trace (See Figure 7.2 in the Troubleshooting Guide, Section 7).

Table 5.8.3B: Recommended PCR cycles based on input amount:

rRNA DEPLETED FFPE RNA (QUANTIFIED AFTER rRNA PURIFICATION)	RECOMMENDED PCR CYCLES
100 ng	7–8
50 ng	8–9
10 ng	10–11
1 ng	13–14

Note: The recommendation of PCR cycles has been optimized using fragmented UHR and FFPE RNA. It may require optimization based on the sample quality to prevent PCR over-amplification.

5.9. Purification of the PCR Reaction using SPRIselect Beads or NEBNext Sample Purification Beads

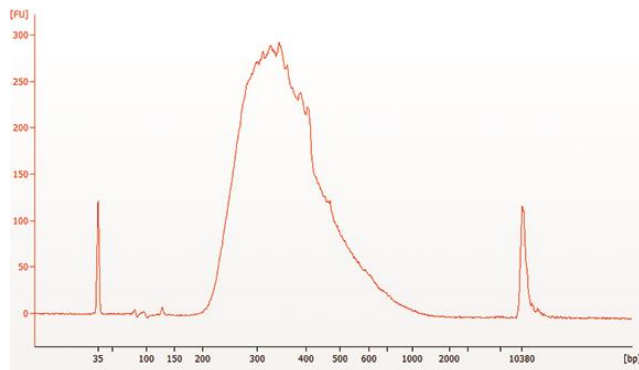
- 5.9.1. Vortex SPRIselect Beads or NEBNext Sample Purification Beads to resuspend.
- 5.9.2. Add 45 µl (0.9X) of resuspended beads to the PCR reaction (~ 50 µl). Mix well on a vortex mixer or by pipetting up and down at least 10 times.
- 5.9.3. Incubate for 5 minutes at room temperature.
- 5.9.4. Quickly spin the tube in a microcentrifuge and place the tube on an appropriate magnetic rack to separate beads from the supernatant. After the solution is clear (about 5 minutes), carefully remove and discard the supernatant. Be careful not to disturb the beads that contain DNA targets.
- 5.9.5. Add 200 µl of freshly prepared 80% ethanol to the tube while in the magnetic rack. Incubate at room temperature for 30 seconds, and then carefully remove and discard the supernatant.
- 5.9.6. Repeat Step 5.9.5. once for a total of 2 washing steps.
- 5.9.7. Air dry the beads for up to 5 minutes while the tube is on the magnetic rack with the lid open.
Caution: Do not over-dry the beads. This may result in lower recovery of DNA target. Elute the samples when the beads are still dark brown and glossy looking, but when all visible liquid has evaporated. When the beads turn lighter brown and start to crack they are too dry.
- 5.9.8. Remove the tube from the magnetic rack. Elute the DNA target from the beads by adding 23 µl 0.1X TE (provided) to the beads. Mix well on a vortex mixer or by pipetting up and down ten times. Quickly spin the tube in a microcentrifuge and incubate for 2 minutes at room temperature. Place the tube on the magnetic rack until the solution is clear (about 2 minutes).
- 5.9.9. Transfer 20 µl of the supernatant to a clean PCR tube, and store at –20°C.

5.10. Assess Library Quality on an Agilent Bioanalyzer DNA Chip

- 5.10.1. Run 1 µl library on a DNA High Sensitivity Chip. A dilution may be necessary for running on a Bioanalyzer High Sensitivity DNA Chip.
- 5.10.2. Check that the electropherogram shows a narrow distribution with a peak size approximately 300 bp.

Note: If a peak at ~ 80 bp (primers) or 128 bp (adaptor-dimer) is visible in the bioanalyzer traces, bring up the sample volume (from Step 5.9.9) to 50 µl with 0.1X TE Buffer and repeat the SPRIselect Bead or NEBNext Sample Purification Bead Cleanup Step (Section 5.9). Adaptor dimer peak range is derived from values observed on Bioanalyzer. Peaks may appear shifted on other library analysis instruments such as TapeStation or Fragment Analyzer.

Figure 5.10.1. Example of FFPE RNA library size distribution on a Bioanalyzer.



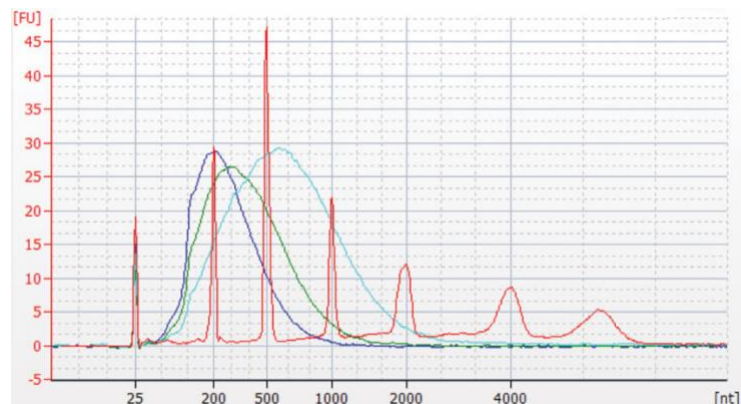
Section 6

Appendix A

6.1. Fragmentation

Note: These recommendations have been optimized using Universal Human Reference Total RNA. Other types of RNA may require different fragmentation times.

Figure 6.1. Modified fragmentation times for longer RNA inserts.



Red Ladder
 Blue 150–300 bp, mRNA fragmented for 15 minutes at 94°C
 Green 200–500 bp mRNA fragmented for 10 minutes at 94°C
 Cyan 400–1,000 bp mRNA fragmented for 5 minutes at 94°C

Modified fragmentation times for longer RNA inserts. Bioanalyzer traces of RNA as shown in an RNA Pico Chip. mRNA isolated from Universal Human Reference RNA and fragmented with First Strand Synthesis Reaction Buffer and Random Primer Mix (2X) at 94°C for 5, 10 or 15 minutes, and purified using 2.2X volume of Agencourt® RNAClean® XP Beads. For libraries with RNA insert sizes larger than 300 bp, fragment RNA between 5–10 minutes and remember to increase the incubation at 42°C from 15 to 50 minutes during the first strand cDNA synthesis reaction in Sections 1, 2 and 4.

6.2. Size Selection of Adaptor Ligated DNA

Note: Size selection should be done after adaptor ligation and USER digestion.

The size selection protocol is based on a starting volume of 96.5 µl. Size selection conditions were optimized with SPRIselect Beads and NEBNext Sample Purification Beads; however, AMPure XP Beads can be used following the same conditions. If using Ampure XP Beads, please allow the beads to warm to room temperature for at least 30 minutes before use.



Please adjust recommended bead volumes for each target size according to Table 6.2. The protocol below is for libraries with a 300 bp insert size (420 bp final library size).

Table 6.2: Recommended size selection conditions for libraries with insert sizes larger than 300 bp.

Note: Size selection for < 100 ng total RNA input is not recommended.

LIBRARY PARAMETER	APPROXIMATE INSERT SIZE	300 bp	400 bp	450 bp
		Approx. Final Library Size	420 bp	520 bp
BEAD VOLUME TO BE ADDED (µl)	1 st Bead Selection	25	20	15
	2 nd Bead Selection	10	10	10

Note: Any differences in insert sizes between the Agilent Bioanalyzer and that obtained from paired end sequencing can be attributed to the higher clustering efficiency of smaller sized fragments.

- 6.2.1. Vortex SPRIselect Beads or NEBNext Sample Purification Beads to resuspend.
- 6.2.2. Add 25 µl of resuspended beads to the 96.5 µl ligation reaction. Mix well by pipetting up and down at least 10 times.
- 6.2.3. Incubate for **5 minutes at room temperature**.

- 6.2.4. Place the tube on an appropriate magnetic rack to separate the beads from the supernatant. If necessary, quickly spin the sample to collect the liquid from the sides of the tube or plate wells before placing on the magnetic rack. After the solution is clear (about 5 minutes), carefully transfer the supernatant containing your DNA to a new tube (**Caution: do not discard the supernatant**). Discard the beads that contain the unwanted large fragments.
- 6.2.5. Add 10 μ l resuspended beads to the supernatant, mix well by pipetting up and down at least 10 times and incubate for 5 minutes at room temperature.
- 6.2.6. Place the tube/plate on an appropriate magnetic rack to separate the beads from the supernatant. If necessary, quickly spin the sample to collect the liquid from the sides of the tube or plate wells before placing on the magnetic rack. After the solution is clear (about 5 minutes), carefully remove and discard the supernatant that contains unwanted DNA. Be careful not to disturb the beads that contain the desired DNA targets (**Caution: do not discard beads**).
- 6.2.7. Add 200 μ l of 80% freshly prepared ethanol to the tube while in the magnetic rack. Incubate at room temperature for 30 seconds, and then carefully remove and discard the supernatant.
- 6.2.8. Repeat Step 6.2.7. once.
- 6.2.9. Air dry the beads for up to 5 minutes while the tube/plate is on the magnetic rack with the lid open.
Caution: Do not over-dry the beads. This may result in lower recovery of DNA target. Elute the samples when the beads are still dark brown and glossy looking, but when all visible liquid has evaporated. When the beads turn lighter brown and start to crack they are too dry.
- 6.2.10. Remove the tube/plate from the magnetic rack. Elute the DNA target from the beads by adding 17 μ l of 0.1 X TE (provided) to the beads. Mix well on a vortex mixer or by pipetting up and down ten times. Quickly spin the tube and incubate for **2 minutes at room temperature**.
- 6.2.11. Place the tube on a magnetic rack. After the solution is clear (about 2 minutes), transfer 15 μ l to a new PCR tube for amplification.

6.3. PCR Enrichment of Size-selected Libraries

Note: Size-selected libraries require 2 additional PCR cycles due to loss during size selection steps compared to non-size-selected libraries.



Use Option A for any NEBNext oligos kit where index primers are supplied in tubes. These kits have the forward and reverse primers supplied in separate tubes.

Use Option B for any NEBNext oligos kit where index primers are supplied in a 96-well plate format. These kits have the forward and reverse (i7 and i5) primers combined. Primers are supplied at 10 μ M combined (5 μ M each).

- 6.3.1. Set up the PCR reaction as described below based on the type of oligos (PCR primers) used.

6.3.1A. Forward and Reverse Primers Separate

COMPONENT	VOLUME PER ONE LIBRARY
Adaptor Ligated DNA (Step 6.2.11.)	15 μ l
• (blue) NEBNext Ultra II Q5 Master Mix	25 μ l
Universal PCR Primer/i5 Primer ^{*,**}	5 μ l
Index (X) Primer/i7 Primer ^{*,**}	5 μ l
Total Volume	50 μl

* NEBNext Oligos must be purchased separately from the library prep kit. Refer to the corresponding NEBNext Oligo kit manual for determining valid barcode combinations.

** Use only one i7 primer/ index primer per sample. Use only one i5 primer (or the universal primer for single index kits) per sample

6.3.1B. Forward and Reverse Primers Combined

COMPONENT	VOLUME PER ONE LIBRARY
Adaptor Ligated DNA (Step 6.2.11.)	15 µl
• (blue) NEBNext Ultra II Q5 Master Mix	25 µl
Index (X) Primer/i7 Primer Mix*	10 µl
Total Volume	50 µl

* NEBNext Oligos must be purchased separately from the library prep kit. Refer to the corresponding NEBNext Oligo kit manual for determining valid barcode combinations.

** Use only one i7 primer/ index primer per sample. Use only one i5 primer (or the universal primer for single index kits) per sample

6.3.2. Mix well by gently pipetting up and down 10 times. Quickly spin the tube in a microcentrifuge.

6.3.3. Place the tube in a thermal cycler with the heated lid set to 105°C. Perform PCR amplification using the following PCR cycling conditions:

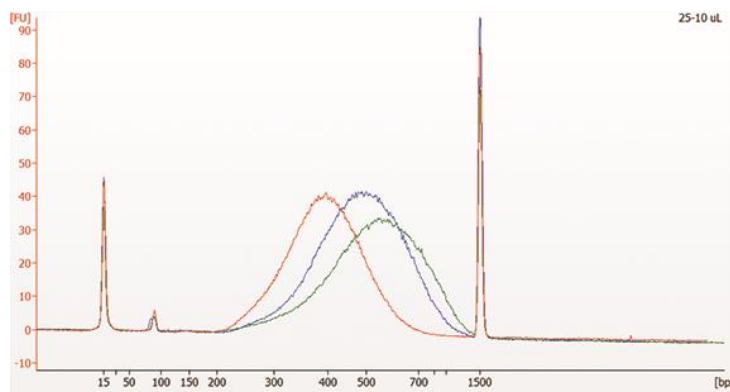
CYCLE STEP	TEMP	TIME	CYCLES
Initial Denaturation	98°C	30 seconds	1
Denaturation	98°C	10 seconds	variable*,**
Annealing/Extension	65°C	75 seconds	
Final Extension	65°C	5 minutes	1
Hold	4°C	∞	

* The number of PCR cycles should be adjusted based on RNA input. Size-selected libraries require additional 2 PCR cycles and should be adjusted accordingly. For example if a non-size selected library requires 8 PCR cycles, the size-selected library should be amplified for 10 cycles (8 + 2) after the size selection.

** It is important to limit the number of PCR cycles to avoid overamplification. If overamplification occurs, a second peak ~ 1,000 bp will appear on the Bioanalyzer trace (See Figure 7.2 in the Troubleshooting Guide, Section 7).

Perform the step “Purification of the PCR Reaction using SPRIselect Beads or NEBNext Sample Purification Beads” from your respective chapter.

Figure 6.3: Bioanalyzer traces of size selected DNA libraries.



50 ng mRNA was fragmented with First Strand Synthesis Reaction Buffer and Random Primer Mix (2X) at 94°C for 10 or 5 minutes. Libraries were size-selected as described in Table 6.2, then amplified by PCR, and run on Agilent Bioanalyzer DNA 1000 chip. Fragmentation times and corresponding size selection conditions are shown in the table below.

Table 6.3:

LIBRARY SAMPLE	FRAGMENTATION TIME	1 st BEAD SELECTION	2 nd BEAD SELECTION
Red	10 minutes	25 µl	10 µl
Blue	5 minutes	20 µl	10 µl
Green	5 minutes	15 µl	10 µl

For libraries with longer inserts (> 200 bp), remember to increase the incubation at 42°C from 15 to 50 minutes during the First Strand cDNA Synthesis reaction.

Section 7 Troubleshooting Guide

OBSERVATIONS	POSSIBLE CAUSES	EFFECT	SUGGESTED SOLUTIONS
Presence of Bioanalyzer peaks < 85 bp (Figure 7.1)	<ul style="list-style-type: none"> • Presence of Primers remaining after PCR clean up 	Primers cannot cluster or be sequenced, but can bind to flowcell and reduce cluster density	<ul style="list-style-type: none"> • Clean up PCR reaction again with 0.9X SPRIselect Beads or NEBNext Sample Purification Beads (second clean up may result in reduction of library yield)
Presence of ~127–140 bp adaptor-dimer Bioanalyzer peak (Figure 7.1)	<ul style="list-style-type: none"> • Addition of non-diluted adaptor • RNA input was too low • RNA was over fragmented or lost during fragmentation • Inefficient Ligation 	Adaptor-dimer will cluster and be sequenced. If ratio is low compared to library, may not be a problem but some reads will be dimers	<ul style="list-style-type: none"> • Dilute adaptor before setting up ligation reaction • Clean up PCR reaction again with 0.9X SPRIselect Beads or NEBNext Sample Purification Beads (second clean up may result in reduction of library yield)
Presence of additional Bioanalyzer peak at higher molecular weight than the expected library size (~ 1,000 bp) (Figure 7.2)	<ul style="list-style-type: none"> • PCR artifact (over-amplification). Represents single-stranded library products that have self-annealed. If the PCR cycle number (or PCR input amount) is too high; in the late cycles of PCR the primers become limiting. Therefore, the adaptor sequences on either end of the fragment anneal to each other. This creates heteroduplexes with different insert sequences that run slower in the Bioanalyzer. 	If ratio is low compared to library, may not be a problem for sequencing	<ul style="list-style-type: none"> • Reduce number of PCR cycles
Broad library size distribution	<ul style="list-style-type: none"> • Under-fragmentation of the RNA 	Library size will contain longer insert sizes	<ul style="list-style-type: none"> • Increase RNA fragmentation time

Figure 7.1:

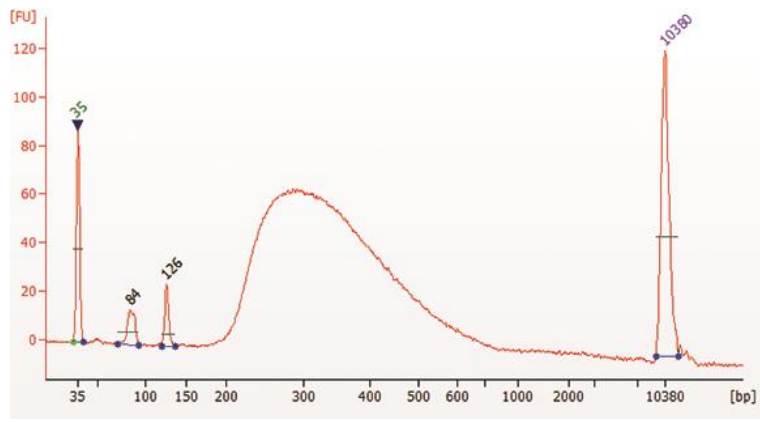
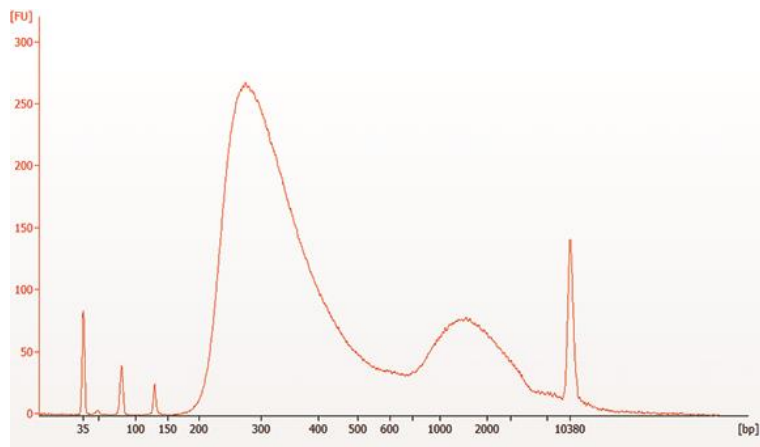


Figure 7.2:



Kit Components

Each set of reagents is functionally validated and compared to the previous lot through construction of libraries using the minimum and maximum amount of Universal Human Reference Total RNA. The previous and current lots are sequenced together on the same Illumina flow cell and compared across various sequence metrics including individual transcript abundances, 5'→3' transcript coverage, and fraction of reads mapping to the reference.

NEB #E7760S Table of Components

NEB #	PRODUCT	VOLUME
E7374A	NEBNext Ligation Enhancer	0.024 ml
E7421A	NEBNext First Strand Synthesis Reaction Buffer	0.192 ml
E7422A	Random Primers	0.048 ml
E7425A	NEBNext Second Strand Synthesis Enzyme Mix	0.096 ml
E7426A	NEBNext Second Strand Synthesis Reaction Buffer with dUTP Mix	0.192 ml
E7428A	NEBNext USER Enzyme	0.072 ml
E7646A	NEBNext Ultra II End Prep Enzyme Mix	0.072 ml
E7647A	NEBNext Ultra II End Prep Reaction Buffer	0.168 ml
E7648A	NEBNext Ultra II Ligation Master Mix	0.720 ml
E7649A	NEBNext Ultra II Q5 Master Mix	0.6 ml
E7761A	NEBNext First Strand Synthesis Enzyme Mix	0.048 ml
E7762A	NEBNext Adaptor Dilution Buffer	2.4 ml
E7763A	(0.1X) TE Buffer	2.78 ml
E7764A	Nuclease-free Water	1.25 ml
E7766A	NEBNext Strand Specificity Reagent	0.192 ml

NEB #E7760L Table of Components

NEB #	PRODUCT	VOLUME
E7374AA	NEBNext Ligation Enhancer	0.096 ml
E7421AA	NEBNext First Strand Synthesis Reaction Buffer	0.768 ml
E7422AA	Random Primers	0.192 ml
E7425AA	NEBNext Second Strand Synthesis Enzyme Mix	0.384 ml
E7426AA	NEBNext Second Strand Synthesis Reaction Buffer with dUTP Mix	0.768 ml
E7428AA	NEBNext USER Enzyme	0.288 ml
E7646AA	NEBNext Ultra II End Prep Enzyme Mix	0.288 ml
E7647AA	NEBNext Ultra II End Prep Reaction Buffer	0.672 ml
E7648AA	NEBNext Ultra II Ligation Master Mix	3 x 0.960 ml
E7649AA	NEBNext Ultra II Q5 Master Mix	2 x 1.2 ml
E7761AA	NEBNext First Strand Synthesis Enzyme Mix	0.192 ml
E7762AA	NEBNext Adaptor Dilution Buffer	9.6 ml
E7763AA	(0.1X) TE Buffer	11.5 ml
E7764AA	Nuclease-free Water	5.7 ml
E7766AA	NEBNext Strand Specificity Reagent	0.768 ml

NEB #E7765S Table of Components

NEB #	PRODUCT	VOLUME
E7374A	NEBNext Ligation Enhancer	0.024 ml
E7421A	NEBNext First Strand Synthesis Reaction Buffer	0.192 ml
E7422A	Random Primers	0.048 ml
E7425A	NEBNext Second Strand Synthesis Enzyme Mix	0.096 ml
E7426A	NEBNext Second Strand Synthesis Reaction Buffer with dUTP Mix	0.192 ml
E7428A	NEBNext USER Enzyme	0.072 ml
E7646A	NEBNext Ultra II End Prep Enzyme Mix	0.072 ml
E7647A	NEBNext Ultra II End Prep Reaction Buffer	0.168 ml
E7648A	NEBNext Ultra II Ligation Master Mix	0.720 ml
E7649A	NEBNext Ultra II Q5 Master Mix	0.6 ml
E7761A	NEBNext First Strand Synthesis Enzyme Mix	0.048 ml
E7762A	NEBNext Adaptor Dilution Buffer	2.4 ml
E7763A	(0.1X) TE Buffer	2.78 ml
E7764A	Nuclease-free Water	1.25 ml
E7766A	NEBNext Strand Specificity Reagent	0.192 ml
E7767S	NEBNext Sample Purification Beads	6.65 ml

NEB #E7765L Table of Components

NEB #	PRODUCT	VOLUME
E7374AA	NEBNext Ligation Enhancer	0.096 ml
E7421AA	NEBNext First Strand Synthesis Reaction Buffer	0.768 ml
E7422AA	Random Primers	0.192 ml
E7425AA	NEBNext Second Strand Synthesis Enzyme Mix	0.384 ml
E7426AA	NEBNext Second Strand Synthesis Reaction Buffer with dUTP Mix	0.768 ml
E7428AA	NEBNext USER Enzyme	0.288 ml
E7646AA	NEBNext Ultra II End Prep Enzyme Mix	0.288 ml
E7647AA	NEBNext Ultra II End Prep Reaction Buffer	0.672 ml
E7648AA	NEBNext Ultra II Ligation Master Mix	3 x 0.960 ml
E7649AA	NEBNext Ultra II Q5 Master Mix	2 x 1.2 ml
E7761AA	NEBNext First Strand Synthesis Enzyme Mix	0.192 ml
E7762AA	NEBNext Adaptor Dilution Buffer	9.6 ml
E7763AA	(0.1X) TE Buffer	11.5 ml
E7764AA	Nuclease-free Water	5.7 ml
E7766AA	NEBNext Strand Specificity Reagent	0.768 ml
E7767L	NEBNext Sample Purification Beads	4 x 6.65 ml

Revision History

REVISION #	DESCRIPTION	DATE
1.0	N/A	
2.0	Updated "Kit includes" and "Required Materials not included." Updated all selection guide diagrams. Update all protocols. Update "Troubleshooting Guide." Delete FAQ Section 8. Place entire manual into new manual format.	12/18
2.1	Updated Table 1.9.3A.	1/19
2.2	Updated "Materials not included", "For use with NEBNext Ribosomal Depletion Kit", second bullet "In NEB #E6310" corrected to "In NEB #E6350"	5/19
3.0	Update Protocol Steps 1.9.1A and 1.9.1B, Steps 2.12.1A and 2.12.1B, 3.12.1A and 3.12.1B, 4.8.1A and 4.8.1B, 5.8.1A and 5.8.1B.	10/19
3.1	Updated product license information.	5/20
4.0	Updated protocols.	4/21
5.0	Updated protocols.	12/22
6.0	Updated protocols. Also updated header and footer with new logo, as well as legal footnote.	7/24

This product is intended for research purposes only. This product is not intended to be used for therapeutic or diagnostic purposes in humans or animals.

Products and content are covered by one or more patents, trademarks and/or copyrights owned or controlled by New England Biolabs, Inc (NEB). The use of trademark symbols does not necessarily indicate that the name is trademarked in the country where it is being read; it indicates where the content was originally developed. See www.neb.com/trademarks. The use of these products may require you to obtain additional third-party intellectual property rights for certain applications. For more information, please email busdev@neb.com.

This product is licensed for research and commercial use from Bio-Rad Laboratories, Inc., under U.S. Pat. Nos. 6,627,424, 7,541,170, 7,670,808, 7,666,645, and corresponding patents in other countries. No rights are granted for use of the product for Digital PCR or real-time PCR applications, with the exception of quantification in Next Generation Sequencing workflows.

This product and its use are the subject of one or more issued and/or pending U.S. and foreign patent applications owned by Max Planck Gesellschaft. The purchase of this product from New England Biolabs, Inc., its affiliates, or its authorized resellers and distributors conveys to the buyer the non-transferable right to use the purchased amount of the product and components of the product in research conducted by the buyer (whether the buyer is an academic or for profit entity) or for limited commercial purposes that are pre-approved by New England Biolabs, Inc. The purchase of this product does not convey a license under any claims in the foregoing patents or patent applications directed to producing the product. The buyer cannot sell or otherwise transfer this product or its components to a third party or otherwise use this product for the following COMMERCIAL PURPOSES: (1) use of the products or its components in manufacturing; (2) use of the product or its components for therapeutic or prophylactic purposes in humans or animals.

AGENCOURT®, AMPURE®, RNACLEAN® AND SPRISELECT® are registered trademarks of Beckman Coulter, Inc.

B CORPORATION® is a registered trademark of B Lab IP, LLC, Inc.

E-GEL® is a registered trademark of Life Technologies, Inc.

SIZESELECT™ is a trademark of Life Technologies, Inc.

BIOANALYZER® is a registered trademark of Agilent Technologies, Inc.

ILLUMINA® is a registered trademark of Illumina, Inc.

ALPAQUA® is a registered trademark of Alpaqua Engineering. LLC

QUBIT® is a registered trademark of Molecular Probes, Inc.

© Copyright 2024, New England Biolabs, Inc.; all rights reserved



www.neb.com